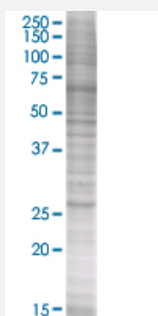


PSMD8 293T Cell Transient Overexpression Lysate(Denatured)

Catalog # H00005714-T01

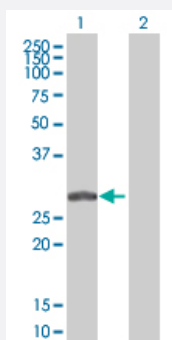
Size 100 uL

Applications



SDS-PAGE Gel

PSMD8 transfected lysate



Western Blot

Lane 1: PSMD8 transfected lysate (28.27 KDa).

Lane 2: Non-transfected lysate.

Specification

Transfected Cell Line 293T

Plasmid pCMV-PSMD8 full-length

Host Human

Theoretical MW (kDa) 28.27

Quality Control Testing Transient overexpression cell lysate was tested with Anti-PSMD8 antibody ([H00005714-B01](#)) by Western Blots.
 SDS-PAGE Gel
 PSMD8 transfected lysate
 Western Blot
 Lane 1: PSMD8 transfected lysate (28.27 KDa).
 Lane 2: Non-transfected lysate.

Storage Buffer	1X Sample Buffer (50 mM Tris-HCl, 2% SDS, 10% glycerol, 300 mM 2-mercaptoethanol, 0.01% Bromophenol blue)
Storage Instruction	Store at -80°C. Aliquot to avoid repeated freezing and thawing.

Applications

- Western Blot

Gene Info — PSMD8

Entrez GeneID	5714
GeneBank Accession#	NM_002812
Protein Accession#	NP_002803
Gene Name	PSMD8
Gene Alias	HIP6, HYPF, MGC1660, Nin1p, Rpn12, S14, p31
Gene Description	proteasome (prosome, macropain) 26S subunit, non-ATPase, 8
Gene Ontology	Hyperlink

Gene Summary	<p>The 26S proteasome is a multicatalytic proteinase complex with a highly ordered structure composed of 2 complexes, a 20S core and a 19S regulator. The 20S core is composed of 4 rings of 28 non-identical subunits; 2 rings are composed of 7 alpha subunits and 2 rings are composed of 7 beta subunits. The 19S regulator is composed of a base, which contains 6 ATPase subunits and 2 non-ATPase subunits, and a lid, which contains up to 10 non-ATPase subunits. Proteasomes are distributed throughout eukaryotic cells at a high concentration and cleave peptides in an ATP/ubiquitin-dependent process in a non-lysosomal pathway. An essential function of a modified proteasome, the immunoproteasome, is the processing of class I MHC peptides. This gene encodes a non-ATPase subunit of the 19S regulator. A pseudogene has been identified on chromosome 1. [provided by RefSeq]</p>
--------------	---

Other Designations	26S proteasome non-ATPase regulatory subunit 8 26S proteasome regulatory subunit S14 26S proteasome regulatory subunit p31 proteasome 26S non-ATPase subunit 8
--------------------	--

Pathway

- [Proteasome](#)