

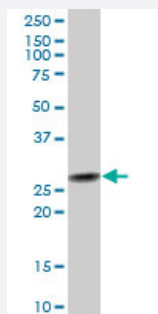
MaxPab®

# PSMD8 purified MaxPab mouse polyclonal antibody (B02P)

Catalog # H00005714-B02P

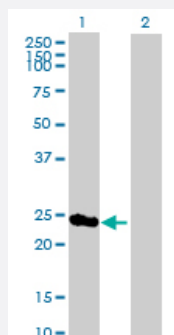
Size 50 ug

## Applications



### Western Blot (Tissue lysate)

PSMD8 MaxPab polyclonal antibody. Western Blot analysis of PSMD8 expression in human placenta.



### Western Blot (Transfected lysate)

Western Blot analysis of PSMD8 expression in transfected 293T cell line ([H00005714-T02](#)) by PSMD8 MaxPab polyclonal antibody.

Lane 1: PSMD8 transfected lysate(28.27 KDa).

Lane 2: Non-transfected lysate.

## Specification

Product Description	Mouse polyclonal antibody raised against a full-length human PSMD8 protein.
Immunogen	PSMD8 (NP_002803.1, 1 a.a. ~ 257 a.a) full-length human protein.
Sequence	<p>MYEQLKGEWNRKSPNLSKCGEELGRLKLVLLELNFLPTTGKLTQQLILARDILEIGAQWSILRKDI</p> <p>PSFERYMAQLKCYFDYKEQLPESAYMHQLLGLNLLFLLSQNRVAEFHTELERLPAKDIQTNVYIKH</p> <p>PVSLEQYLMEGSYNKVFLAKGNIPAESYFFIDILLDTIRDEIAGCIEKAYEKILFTEATRILFFNTPKKM</p> <p>TDYAKKRGWVLGPNNYYSFASQQQKPEDTTIPSTELAKQVIEYARQLEMIV</p>
Host	Mouse
Reactivity	Human

Quality Control Testing	Antibody reactive against mammalian transfected lysate.
Storage Buffer	In 1x PBS, pH 7.4
Storage Instruction	Store at -20°C or lower. Aliquot to avoid repeated freezing and thawing.

## Applications

- Western Blot (Tissue lysate)

PSMD8 MaxPab polyclonal antibody. Western Blot analysis of PSMD8 expression in human placenta.

[Protocol Download](#)

- Western Blot (Transfected lysate)

Western Blot analysis of PSMD8 expression in transfected 293T cell line ([H00005714-T02](#)) by PSMD8 MaxPab polyclonal antibody.

Lane 1: PSMD8 transfected lysate(28.27 KDa).

Lane 2: Non-transfected lysate.

[Protocol Download](#)

## Gene Info — PSMD8

Entrez GeneID	<a href="#">5714</a>
GeneBank Accession#	<a href="#">NM_002812</a>
Protein Accession#	<a href="#">NP_002803.1</a>
Gene Name	PSMD8
Gene Alias	HIP6, HYPF, MGC1660, Nin1p, Rpn12, S14, p31
Gene Description	proteasome (prosome, macropain) 26S subunit, non-ATPase, 8
Gene Ontology	<a href="#">Hyperlink</a>

**Gene Summary**

The 26S proteasome is a multicatalytic proteinase complex with a highly ordered structure composed of 2 complexes, a 20S core and a 19S regulator. The 20S core is composed of 4 rings of 28 non-identical subunits; 2 rings are composed of 7 alpha subunits and 2 rings are composed of 7 beta subunits. The 19S regulator is composed of a base, which contains 6 ATPase subunits and 2 non-ATPase subunits, and a lid, which contains up to 10 non-ATPase subunits. Proteasomes are distributed throughout eukaryotic cells at a high concentration and cleave peptides in an ATP/ubiquitin-dependent process in a non-lysosomal pathway. An essential function of a modified proteasome, the immunoproteasome, is the processing of class I MHC peptides. This gene encodes a non-ATPase subunit of the 19S regulator. A pseudogene has been identified on chromosome 1. [provided by RefSeq]

**Other Designations**

26S proteasome non-ATPase regulatory subunit 8|26S proteasome regulatory subunit S14|26S proteasome regulatory subunit p31|proteasome 26S non-ATPase subunit 8

**Pathway**

- [Proteasome](#)