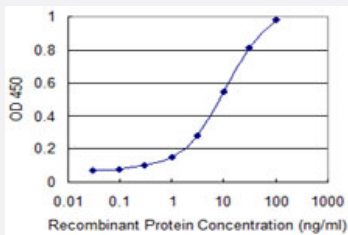


PSMD7 monoclonal antibody (M02), clone 2E5

Catalog # H00005713-M02

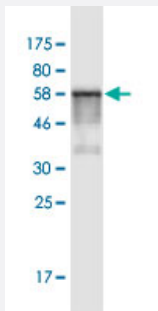
Size 100 ug

Applications



Sandwich ELISA (Recombinant protein)

Detection limit for recombinant GST tagged PSMD7 is 0.1 ng/ml as a capture antibody.



Western Blot detection against Immunogen (61.38 KDa) .

Specification

Product Description

Mouse monoclonal antibody raised against a full-length recombinant PSMD7.

Immunogen

PSMD7 (AAH12606, 1 a.a. ~ 324 a.a) full-length recombinant protein with GST tag. MW of the GST tag alone is 26 KDa.

Sequence

MP ELAVQKV VVHPLVLLSVVDHFN RIGKVGNQKR VVGVLG SWQKKVLDVSNSFAVPFDEDDK
DDSVWF LDH DYLENMYGMF KKV NARERIVGWYHTGPKLHKNDI AINELMKRYCPNSVLVIIDVKPK
DLGLPTEAYISVEEVHDDGTPTSKTFEHVTSEIGAEAEAEVGV EHL LRDIKDTTVGTLSQRITNQVH
GLKGLNSKLLDIRSYLEKVATGKLPINH QIYQLQDVFNLLPDVSLQEFVKAFY LKTNDQM VVY LAS
LIRSVVALHNLINNKIADRDAEKKEGQEKEESKKDRKEDKEKDKDKEKSDVKKEEKKEKK

Host

Mouse

Reactivity	Human
Interspecies Antigen Sequence	Mouse (97); Rat (96)
Isotype	IgG1 Kappa
Quality Control Testing	Antibody Reactive Against Recombinant Protein. Western Blot detection against Immunogen (61.38 KDa) .
Storage Buffer	In 1x PBS, pH 7.4
Storage Instruction	Store at -20°C or lower. Aliquot to avoid repeated freezing and thawing.

Applications

- Western Blot (Recombinant protein)

[Protocol Download](#)

- Sandwich ELISA (Recombinant protein)

Detection limit for recombinant GST tagged PSMD7 is 0.1 ng/ml as a capture antibody.

[Protocol Download](#)

- ELISA

Gene Info — PSMD7

Entrez GeneID	5713
GeneBank Accession#	BC012606
Protein Accession#	AAH12606
Gene Name	PSMD7
Gene Alias	MOV34, P40, Rpn8, S12
Gene Description	proteasome (prosome, macropain) 26S subunit, non-ATPase, 7
Omim ID	157970
Gene Ontology	Hyperlink

Gene Summary

The 26S proteasome is a multicatalytic proteinase complex with a highly ordered structure composed of 2 complexes, a 20S core and a 19S regulator. The 20S core is composed of 4 rings of 28 non-identical subunits; 2 rings are composed of 7 alpha subunits and 2 rings are composed of 7 beta subunits. The 19S regulator is composed of a base, which contains 6 ATPase subunits and 2 non-ATPase subunits, and a lid, which contains up to 10 non-ATPase subunits. Proteasomes are distributed throughout eukaryotic cells at a high concentration and cleave peptides in an ATP/ubiquitin-dependent process in a non-lysosomal pathway. An essential function of a modified proteasome, the immunoproteasome, is the processing of class I MHC peptides. This gene encodes a non-ATPase subunit of the 19S regulator. A pseudogene has been identified on chromosome 17. [provided by RefSeq]

Other Designations

26S proteasome non-ATPase regulatory subunit 7|26S proteasome regulatory subunit S12|Moloney leukemia virus-34 proviral integration|Mov34 homolog|proteasome (prosome, macropain) 26S subunit, non-ATPase, 7 (Mov34 homolog)|proteasome 26S non-ATPase subunit

Pathway

- [Proteasome](#)

Disease

- [Genetic Predisposition to Disease](#)