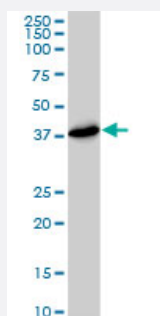


PSMD7 monoclonal antibody (M01), clone 2G5

Catalog # H00005713-M01

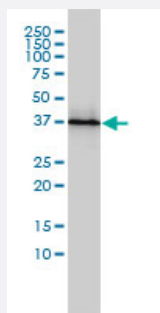
Size 100 ug

Applications



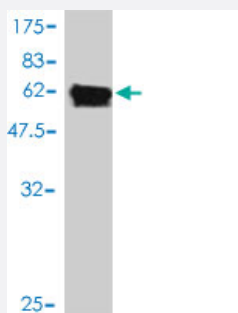
Western Blot (Cell lysate)

PSMD7 monoclonal antibody (M01), clone 2G5. Western Blot analysis of PSMD7 expression in HeLa S3 NE (Cat # L013V3).



Western Blot (Cell lysate)

PSMD7 monoclonal antibody (M01), clone 2G5 Western Blot analysis of PSMD7 expression in Jurkat (Cat # L017V1).



Western Blot detection against Immunogen (61.38 kDa) .

Specification

Product Description

Mouse monoclonal antibody raised against a full length recombinant PSMD7.

Immunogen	PSMD7 (AAH12606, 1 a.a. ~ 324 a.a) full-length recombinant protein with GST tag. MW of the GST tag alone is 26 KDa.
Sequence	MPELAVQKVVVHPLVLLSVVDHFNRIKVGNGQKRVVGVLLGSWQKKVLDVSNSFAVPFDEDDK DDSVWFLDHDYLENMYGMFKKVNARERIVGWYHTGPKLHKNDIAINELMKRYCPNSVLVIDVKPK DLGLPTEAYISVEEVHDDGTPTSKTFEHVTSEIGAEAEVEVGVEHLLRDIKDTTVGTLSQRITNQVH GLKGLNSKLLDIRSYLEKVATGKLPINHQIYQLQDVFNLLPDVSLQEFVKAFYLKTNDQMVVVYLAS LIRSVVALHNLINNKIADRDAEKKEGQEKEESKKDRKEDKEKDKDEKSDVKKEEKKEKK
Host	Mouse
Reactivity	Human
Interspecies Antigen Sequence	Mouse (97); Rat (96)
Isotype	IgG1 kappa
Quality Control Testing	Antibody Reactive Against Recombinant Protein. Western Blot detection against Immunogen (61.38 KDa) .
Storage Buffer	In 1x PBS, pH 7.4
Storage Instruction	Store at -20°C or lower. Aliquot to avoid repeated freezing and thawing.

Applications

- Western Blot (Cell lysate)

PSMD7 monoclonal antibody (M01), clone 2G5. Western Blot analysis of PSMD7 expression in Hela S3 NE (Cat # L013V3).

[Protocol Download](#)

- Western Blot (Cell lysate)

PSMD7 monoclonal antibody (M01), clone 2G5 Western Blot analysis of PSMD7 expression in Jurkat (Cat # L017V1).

[Protocol Download](#)

- Western Blot (Recombinant protein)

[Protocol Download](#)

- ELISA

Gene Info — PSMD7

Entrez GeneID	5713
GeneBank Accession#	BC012606
Protein Accession#	AAH12606
Gene Name	PSMD7
Gene Alias	MOV34, P40, Rpn8, S12
Gene Description	proteasome (prosome, macropain) 26S subunit, non-ATPase, 7
Omim ID	157970
Gene Ontology	Hyperlink
Gene Summary	<p>The 26S proteasome is a multicatalytic proteinase complex with a highly ordered structure composed of 2 complexes, a 20S core and a 19S regulator. The 20S core is composed of 4 rings of 28 non-identical subunits; 2 rings are composed of 7 alpha subunits and 2 rings are composed of 7 beta subunits. The 19S regulator is composed of a base, which contains 6 ATPase subunits and 2 non-ATPase subunits, and a lid, which contains up to 10 non-ATPase subunits. Proteasomes are distributed throughout eukaryotic cells at a high concentration and cleave peptides in an ATP/ubiquitin-dependent process in a non-lysosomal pathway. An essential function of a modified proteasome, the immunoproteasome, is the processing of class I MHC peptides. This gene encodes a non-ATPase subunit of the 19S regulator. A pseudogene has been identified on chromosome 17. [provided by RefSeq]</p>
Other Designations	26S proteasome non-ATPase regulatory subunit 7 26S proteasome regulatory subunit S12 Moloney leukemia virus-34 proviral integration Mov34 homolog proteasome (prosome, macropain) 26S subunit, non-ATPase, 7 (Mov34 homolog) proteasome 26S non-ATPase subunit

Pathway

- [Proteasome](#)

Disease

- [Genetic Predisposition to Disease](#)