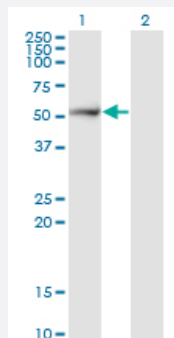


# PSMD5 monoclonal antibody (M17), clone 1H7

Catalog # H00005711-M17

Size 100 ug

## Applications

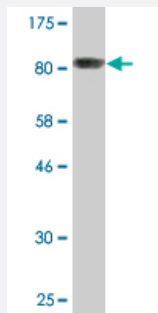


### Western Blot (Transfected lysate)

Western Blot analysis of PSMD5 expression in transfected 293T cell line by PSMD5 monoclonal antibody (M17), clone 1H7.

Lane 1: PSMD5 transfected lysate (Predicted MW: 56.2 KDa).

Lane 2: Non-transfected lysate.



Western Blot detection against Immunogen (80.96 KDa) .

## Specification

### Product Description

Mouse monoclonal antibody raised against a full-length recombinant PSMD5.

### Immunogen

PSMD5 (AAH14478.1, 1 a.a. ~ 504 a.a) full-length recombinant protein with GST tag. MW of the GST tag alone is 26 KDa.

### Sequence

MAAQALALLREVARLEAPLEELRALHSVLQAVPLNELRQQAAELRLGPLFSLLENHREKTTLCV  
SILERLLQAMEPVHVARNLRVDLQRGLIHPDDSVKILTSQIGRIVENS DAVTEILNNAELLKQMYCIG  
GENLSVAKAAIKSLSRISLTQAGLEALFESNLLDDLKSVMTNDIVRYRVYELIIEISSVSPESLNYCT  
TSGLVTQLLRELTGEDVLVRATCIEMVTSLAYTHHGRQYLAQEGVIDQISNIVGADSDPFSSFYLP  
GVKFFGNLAVMDSPQQICERYPIFVEKVFEMIESQDPTMIGVAVDTVIGILGSNVEGKQVLQKTGTR  
FERLLMRIGHQSKNAPVELKIRCLDAISSLLYPPEQQTDDLRLMTESWFSLSRDPLELFRGISSQ  
PFPELHCAALKVFATAIANQPWAQKLMFNSPGFVEYVVDVSVEHDKASKDAKYELVKALANSKTIA  
EIFGNPNYLRRLRTRYLSEGPYYVKPVSTTAVEGAE

Host	Mouse
Reactivity	Human
Isotype	IgG1 Kappa
Quality Control Testing	Antibody Reactive Against Recombinant Protein. Western Blot detection against Immunogen (80.96 KDa) .
Storage Buffer	In 1x PBS, pH 7.4
Storage Instruction	Store at -20°C or lower. Aliquot to avoid repeated freezing and thawing.

## Applications

- Western Blot (Transfected lysate)

Western Blot analysis of PSMD5 expression in transfected 293T cell line by PSMD5 monoclonal antibody (M17), clone 1H7.

Lane 1: PSMD5 transfected lysate (Predicted MW: 56.2 KDa).

Lane 2: Non-transfected lysate.

[Protocol Download](#)

- Western Blot (Recombinant protein)

[Protocol Download](#)

- ELISA

## Gene Info — PSMD5

Entrez GeneID	<a href="#">5711</a>
GeneBank Accession#	<a href="#">BC014478</a>
Protein Accession#	<a href="#">AAH14478.1</a>
Gene Name	PSMD5
Gene Alias	KIAA0072, MGC23145, S5B
Gene Description	proteasome (prosome, macropain) 26S subunit, non-ATPase, 5
Omim ID	<a href="#">604452</a>

**Gene Ontology**[Hyperlink](#)**Gene Summary**

The 26S proteasome is a multicatalytic proteinase complex with a highly ordered structure composed of 2 complexes, a 20S core and a 19S regulator. The 20S core is composed of 4 rings of 28 non-identical subunits; 2 rings are composed of 7 alpha subunits and 2 rings are composed of 7 beta subunits. The 19S regulator is composed of a base, which contains 6 ATPase subunits and 2 non-ATPase subunits, and a lid, which contains up to 10 non-ATPase subunits. Proteasomes are distributed throughout eukaryotic cells at a high concentration and cleave peptides in an ATP/ubiquitin-dependent process in a non-lysosomal pathway. An essential function of a modified proteasome, the immunoproteasome, is the processing of class I MHC peptides. This gene encodes a non-ATPase subunit of the 19S regulator base. [provided by RefSeq]

**Other Designations**

26S protease subunit S5 basic|26S proteasome non-ATPase regulatory subunit 5|26S proteasome subunit S5B|OTTHUMP00000021990|proteasome 26S non-ATPase subunit 5