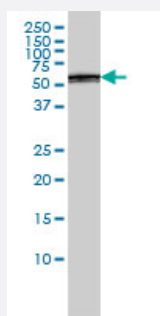


# PSMD5 monoclonal antibody (M01), clone 3E2

Catalog # H00005711-M01

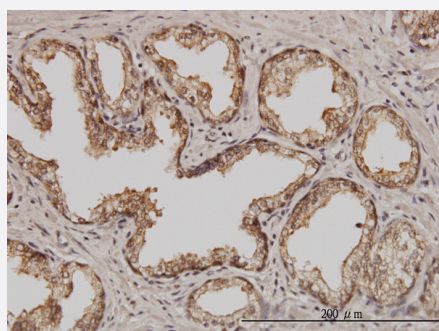
Size 100 ug

## Applications



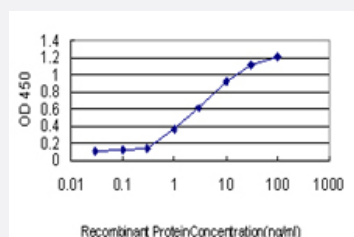
### Western Blot (Cell lysate)

PSMD5 monoclonal antibody (M01), clone 3E2 Western Blot analysis of PSMD5 expression in A-431 ( Cat # L015V1 ).



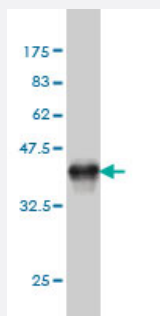
### Immunohistochemistry (Formalin/PFA-fixed paraffin-embedded sections)

Immunoperoxidase of monoclonal antibody to PSMD5 on formalin-fixed paraffin-embedded human prostate. [antibody concentration 3 ug/ml]



### Sandwich ELISA (Recombinant protein)

Detection limit for recombinant GST tagged PSMD5 is approximately 0.1 ng/ml as a capture antibody.



Western Blot detection against Immunogen (36.74 KDa) .

## Specification

<b>Product Description</b>	Mouse monoclonal antibody raised against a partial recombinant PSMD5.
<b>Immunogen</b>	PSMD5 (AAH14478, 405 a.a. ~ 504 a.a) partial recombinant protein with GST tag. MW of the GST tag alone is 26 KDa.
<b>Sequence</b>	QPFPELHCAALKVFTAIANQPWAQKLMFNSPGFVEYVVDERSVEHDKASKDAKYELVKALANSKTI AEIFGNPNYLRLRRTLSEGPYYVKPVSTTAVEGAE
<b>Host</b>	Mouse
<b>Reactivity</b>	Human
<b>Isotype</b>	IgG1 Kappa
<b>Quality Control Testing</b>	Antibody Reactive Against Recombinant Protein. Western Blot detection against Immunogen (36.74 KDa) .
<b>Storage Buffer</b>	In 1x PBS, pH 7.4
<b>Storage Instruction</b>	Store at -20°C or lower. Aliquot to avoid repeated freezing and thawing.

## Applications

- Western Blot (Cell lysate)

PSMD5 monoclonal antibody (M01), clone 3E2 Western Blot analysis of PSMD5 expression in A-431 ( Cat # L015V1 ).

[Protocol Download](#)

- Western Blot (Recombinant protein)

[Protocol Download](#)

- Immunohistochemistry (Formalin/PFA-fixed paraffin-embedded sections)

Immunoperoxidase of monoclonal antibody to PSMD5 on formalin-fixed paraffin-embedded human prostate. [antibody concentration 3 ug/ml]

[Protocol Download](#)

- Sandwich ELISA (Recombinant protein)

Detection limit for recombinant GST tagged PSMD5 is approximately 0.1ng/ml as a capture antibody.

[Protocol Download](#)

- ELISA

## Gene Info — PSMD5

Entrez GeneID [5711](#)

GeneBank Accession# [BC014478](#)

Protein Accession# [AAH14478](#)

Gene Name PSMD5

Gene Alias KIAA0072, MGC23145, S5B

Gene Description proteasome (prosome, macropain) 26S subunit, non-ATPase, 5

Omim ID [604452](#)

Gene Ontology [Hyperlink](#)

**Gene Summary**

The 26S proteasome is a multicatalytic proteinase complex with a highly ordered structure composed of 2 complexes, a 20S core and a 19S regulator. The 20S core is composed of 4 rings of 28 non-identical subunits; 2 rings are composed of 7 alpha subunits and 2 rings are composed of 7 beta subunits. The 19S regulator is composed of a base, which contains 6 ATPase subunits and 2 non-ATPase subunits, and a lid, which contains up to 10 non-ATPase subunits. Proteasomes are distributed throughout eukaryotic cells at a high concentration and cleave peptides in an ATP/ubiquitin-dependent process in a non-lysosomal pathway. An essential function of a modified proteasome, the immunoproteasome, is the processing of class I MHC peptides. This gene encodes a non-ATPase subunit of the 19S regulator base. [provided by RefSeq]

**Other Designations**

26S protease subunit S5 basic|26S proteasome non-ATPase regulatory subunit 5|26S proteasome subunit S5B|OTTHUMP00000021990|proteasome 26S non-ATPase subunit 5