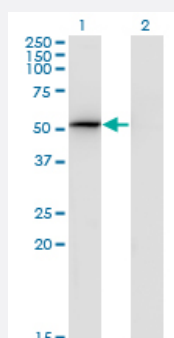


PSMD4 monoclonal antibody (M01), clone 3C9

Catalog # H00005710-M01

Size 100 ug

Applications

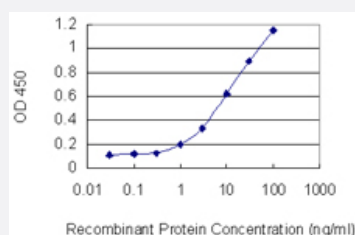


Western Blot (Transfected lysate)

Western Blot analysis of PSMD4 expression in transfected 293T cell line by PSMD4 monoclonal antibody (M01), clone 3C9.

Lane 1: PSMD4 transfected lysate (40.7 kDa).

Lane 2: Non-transfected lysate.



Sandwich ELISA (Recombinant protein)

Detection limit for recombinant GST tagged PSMD4 is 0.3 ng/ml as a capture antibody.



Western Blot detection against Immunogen (37.84 kDa).

Specification

Product Description

Mouse monoclonal antibody raised against a partial recombinant PSMD4.

Immunogen	PSMD4 (NP_002801, 1 a.a. ~ 110 a.a) partial recombinant protein with GST tag. MW of the GST tag alone is 26 KDa.
Sequence	MVLESTMVCVDNSEYMRNGDFLPTRLQAQQDAVNIVCHSKTRSNPENNVGLITLANDCEVLTTLT PDTGRILSKLHTVQPKGKITFCTGIRVAHLALKHRQGKNHKMRII
Host	Mouse
Reactivity	Human
Isotype	IgG2a Kappa
Quality Control Testing	Antibody Reactive Against Recombinant Protein. Western Blot detection against Immunogen (37.84 KDa) .
Storage Buffer	In 1x PBS, pH 7.4
Storage Instruction	Store at -20°C or lower. Aliquot to avoid repeated freezing and thawing.

Applications

- Western Blot (Transfected lysate)

Western Blot analysis of PSMD4 expression in transfected 293T cell line by PSMD4 monoclonal antibody (M01), clone 3C9.

Lane 1: PSMD4 transfected lysate(40.7 KDa).

Lane 2: Non-transfected lysate.

[Protocol Download](#)

- Western Blot (Recombinant protein)

[Protocol Download](#)

- Sandwich ELISA (Recombinant protein)

Detection limit for recombinant GST tagged PSMD4 is 0.3 ng/ml as a capture antibody.

[Protocol Download](#)

- ELISA

Gene Info — PSMD4

Entrez GeneID [5710](#)

GeneBank Accession# [NM_002810](#)

Protein Accession#	NP_002801
Gene Name	PSMD4
Gene Alias	AF, AF-1, ASF, MCB1, Rpn10, S5A, pUB-R5
Gene Description	proteasome (prosome, macropain) 26S subunit, non-ATPase, 4
Omim ID	601648
Gene Ontology	Hyperlink
Gene Summary	<p>The 26S proteasome is a multicatalytic proteinase complex with a highly ordered structure composed of 2 complexes, a 20S core and a 19S regulator. The 20S core is composed of 4 rings of 28 non-identical subunits; 2 rings are composed of 7 alpha subunits and 2 rings are composed of 7 beta subunits. The 19S regulator is composed of a base, which contains 6 ATPase subunits and 2 non-ATPase subunits, and a lid, which contains up to 10 non-ATPase subunits. Proteasomes are distributed throughout eukaryotic cells at a high concentration and cleave peptides in an ATP/ubiquitin-dependent process in a non-lysosomal pathway. An essential function of a modified proteasome, the immunoproteasome, is the processing of class I MHC peptides. This gene encodes one of the non-ATPase subunits of the 19S regulator lid. Pseudogenes have been identified on chromosomes 10 and 21. [provided by RefSeq]</p>
Other Designations	26S protease subunit S5a 26S proteasome non-ATPase regulatory subunit 4 OTTHUMP00000014286 OTTHUMP00000059963 S5a/antiseecretory factor protein angiocidin antiseecretory factor 1 multiubiquitin chain binding protein proteasome 26S non-ATPase subunit 4

Pathway

- [Proteasome](#)