

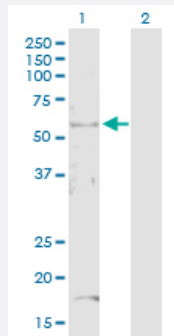
MaxPab®

PSMD4 purified MaxPab rabbit polyclonal antibody (D01P)

Catalog # H00005710-D01P

Size 100 ug

Applications



Western Blot (Transfected lysate)

Western Blot analysis of PSMD4 expression in transfected 293T cell line ([H00005710-T01](#)) by PSMD4 MaxPab polyclonal antibody.

Lane 1: PSMD4 transfected lysate(40.70 kDa).

Lane 2: Non-transfected lysate.

Specification

Product Description	Rabbit polyclonal antibody raised against a full-length human PSMD4 protein.
Immunogen	PSMD4 (NP_002801.1, 1 a.a. ~ 377 a.a) full-length human protein.
Sequence	MVLESTMVCVDNSEYMRNGDFLPTRLQAQQDAVNIVCHSKTRSNPENNVGLITLANDCEVLTTLT PDTGRILSKLHTVQPKGKITFCTGIRVAHLALKHRQGNHMKMRIFAQVGVSPVEDNEKDLVKLAKRLK KEKVNVDIINFGEDEVNTEKLTAFVNTLNGKDGTSGLVTVPPGPSLADALISSPILAGEGGAMLGL GASDFEFGVDPSADPELALALRVSMEEQRQRQEEEEARRAAAAASAAEAGIATTGTEDSDDALLK MTISQQEFGRTGLPDLSSMTEEEQIAYAMQMSLQGAIEFGQAESADIDASSAMDTSEPAKEEDDY DVMQDPEFLQSVLENLPGVDPNNEAIRNAMGSLASQATKDGKKDKKEEDKK
Host	Rabbit
Reactivity	Human
Quality Control Testing	Antibody reactive against mammalian transfected lysate.
Storage Buffer	In 1x PBS, pH 7.4
Storage Instruction	Store at -20°C or lower. Aliquot to avoid repeated freezing and thawing.

Applications

- Western Blot (Transfected lysate)

Western Blot analysis of PSMD4 expression in transfected 293T cell line ([H00005710-T01](#)) by PSMD4 MaxPab polyclonal antibody.

Lane 1: PSMD4 transfected lysate(40.70 KDa).

Lane 2: Non-transfected lysate.

[Protocol Download](#)

Gene Info — PSMD4

Entrez GeneID [5710](#)

GeneBank Accession# [NM_002810.2](#)

Protein Accession# [NP_002801.1](#)

Gene Name PSMD4

Gene Alias AF, AF-1, ASF, MCB1, Rpn10, S5A, pUB-R5

Gene Description proteasome (prosome, macropain) 26S subunit, non-ATPase, 4

Omim ID [601648](#)

Gene Ontology [Hyperlink](#)

Gene Summary

The 26S proteasome is a multicatalytic proteinase complex with a highly ordered structure composed of 2 complexes, a 20S core and a 19S regulator. The 20S core is composed of 4 rings of 28 non-identical subunits; 2 rings are composed of 7 alpha subunits and 2 rings are composed of 7 beta subunits. The 19S regulator is composed of a base, which contains 6 ATPase subunits and 2 non-ATPase subunits, and a lid, which contains up to 10 non-ATPase subunits. Proteasomes are distributed throughout eukaryotic cells at a high concentration and cleave peptides in an ATP/ubiquitin-dependent process in a non-lysosomal pathway. An essential function of a modified proteasome, the immunoproteasome, is the processing of class I MHC peptides. This gene encodes one of the non-ATPase subunits of the 19S regulator lid. Pseudogenes have been identified on chromosomes 10 and 21. [provided by RefSeq]

Other Designations

26S protease subunit S5a|26S proteasome non-ATPase regulatory subunit 4|OTTHUMP00000014286|OTTHUMP00000059963|S5a/antiseecretory factor protein|angiocidin|antiseecretory factor 1|multiubiquitin chain binding protein|proteasome 26S non-ATPase subunit 4

Pathway

- [Proteasome](#)