

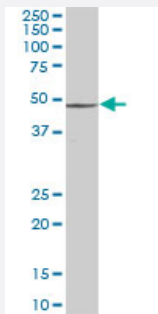
MaxPab®

PSMD4 purified MaxPab mouse polyclonal antibody (B01P)

Catalog # H00005710-B01P

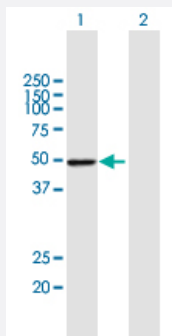
Size 50 ug

Applications



Western Blot (Cell lysate)

PSMD4 MaxPab polyclonal antibody. Western Blot analysis of PSMD4 expression in K-562.



Western Blot (Transfected lysate)

Western Blot analysis of PSMD4 expression in transfected 293T cell line ([H00005710-T01](#)) by PSMD4 MaxPab polyclonal antibody.

Lane 1: PSMD4 transfected lysate(41.47 KDa).

Lane 2: Non-transfected lysate.

Specification

Product Description

Mouse polyclonal antibody raised against a full-length human PSMD4 protein.

Immunogen

PSMD4 (NP_002801.1, 1 a.a. ~ 377 a.a) full-length human protein.

Sequence

MVLESTMVCVDNSEYMRNGDFLPTRLQAQQDAVNVCHSKTRSNPENNVLITLANDCEVLTTLT
PDTGRILSKLHTVQPKGKITFCTGIRVAHLALKHRQGKNHKMRIAFVGGSPVEDNEKDLVKLAKRLK
KEKVNVDIINFGEDEVNTEKLTAFVNTLNGKDGTSGLVTVPPGPSLADALISSPILAGEGGAMLGL
GASDFEFGVDPSADPELALALRVSMEEQRQRQEEEEARRAAAAASAAEAGIATTGTEDSDDALLK
MTISQQEFGRGTGLPDLSSMTEEEQIAYAMQMSLQGAIEFGQAESADIDASSAMDTSEPAKEEDDY
DVMQDPEFLQSVLENLPGVDPNNEAIRNAMGSLASQATKDGKKDKKEEDKK

Host

Mouse

Reactivity	Human
Quality Control Testing	Antibody reactive against mammalian transfected lysate.
Storage Buffer	In 1x PBS, pH 7.4
Storage Instruction	Store at -20°C or lower. Aliquot to avoid repeated freezing and thawing.

Applications

- Western Blot (Cell lysate)

PSMD4 MaxPab polyclonal antibody. Western Blot analysis of PSMD4 expression in K-562.

[Protocol Download](#)

- Western Blot (Transfected lysate)

Western Blot analysis of PSMD4 expression in transfected 293T cell line ([H00005710-T01](#)) by PSMD4 MaxPab polyclonal antibody.

Lane 1: PSMD4 transfected lysate(41.47 KDa).

Lane 2: Non-transfected lysate.

[Protocol Download](#)

Gene Info — PSMD4

Entrez GeneID	5710
GeneBank Accession#	NM_002810.2
Protein Accession#	NP_002801.1
Gene Name	PSMD4
Gene Alias	AF, AF-1, ASF, MCB1, Rpn10, S5A, pUB-R5
Gene Description	proteasome (prosome, macropain) 26S subunit, non-ATPase, 4
Omim ID	601648
Gene Ontology	Hyperlink

Gene Summary

The 26S proteasome is a multicatalytic proteinase complex with a highly ordered structure composed of 2 complexes, a 20S core and a 19S regulator. The 20S core is composed of 4 rings of 28 non-identical subunits; 2 rings are composed of 7 alpha subunits and 2 rings are composed of 7 beta subunits. The 19S regulator is composed of a base, which contains 6 ATPase subunits and 2 non-ATPase subunits, and a lid, which contains up to 10 non-ATPase subunits. Proteasomes are distributed throughout eukaryotic cells at a high concentration and cleave peptides in an ATP/ubiquitin-dependent process in a non-lysosomal pathway. An essential function of a modified proteasome, the immunoproteasome, is the processing of class I MHC peptides. This gene encodes one of the non-ATPase subunits of the 19S regulator lid. Pseudogenes have been identified on chromosomes 10 and 21. [provided by RefSeq]

Other Designations

26S protease subunit S5a|26S proteasome non-ATPase regulatory subunit 4|OTTHUMP00000014286|OTTHUMP00000059963|S5a/antiseecretory factor protein|angiocidin|antiseecretory factor 1|multiubiquitin chain binding protein|proteasome 26S non-ATPase subunit 4

Publication Reference

- [Glatiramer acetate and nanny proteins restrict access of the multiple sclerosis autoantigen myelin basic protein to the 26S proteasome.](#)

Ekaterina Kuzina, Anna Kudriaeva, Ivan Smirnov, Michael V Dubina, Alexander Gabibov, Alexey Belogurov Jr.

BioMed Research International 2014 Sep; 2014:926394.

Application: IP, Bovine, Mouse, Bovine brain, Mouse brain

- [Glatiramer acetate and nanny proteins restrict access of the multiple sclerosis autoantigen myelin basic protein to the 26S proteasome.](#)

Ekaterina Kuzina, Anna Kudriaeva, Ivan Smirnov, Michael V Dubina, Alexander Gabibov, Alexey Belogurov Jr.

BioMed Research International 2014 Sep; 2014:926394.

Application: IP, Bovine, Mouse, Bovine brain, Mouse brain

Pathway

- [Proteasome](#)