

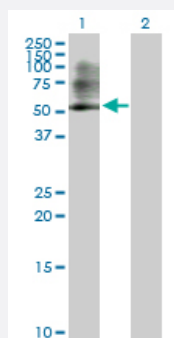
MaxPab®

PSMC3 purified MaxPab rabbit polyclonal antibody (D01P)

Catalog # H00005702-D01P

Size 100 ug

Applications



Western Blot (Transfected lysate)

Western Blot analysis of PSMC3 expression in transfected 293T cell line ([H00005702-T01](#)) by PSMC3 MaxPab polyclonal antibody.

Lane 1: PSMC3 transfected lysate (49.20 kDa).

Lane 2: Non-transfected lysate.

Specification

Product Description

Rabbit polyclonal antibody raised against a full-length human PSMC3 protein.

Immunogen

PSMC3 (NP_002795.2, 1 a.a. ~ 439 a.a) full-length human protein.

Sequence

MNLLPNIESPVTRQEKMATVWDEAEQDGIGEEVLKMSTEEIIQRTRLLDSEIKIMKSEVLRVTHELQ
AMKDKIKENSEKIKVNKTLPLYLSNVIELLDVDPNDQEEDGANIDLSQRKGKCAVIKTSTRQTYFL
PVIGLVDAEKLKPGDLVGVNKSYSILETLPTHEYDSRVKAMEVDERPTEQYSDIGGLDKQIQELVE
AIVLPMNHKEKFENLGIQPPKGVLMYGPPGTGKTLLARACAAQTKATFLKLAGPQLVQMFIGDGA
KLVRDAFALAKEKAPSIIFIDELDAIGTKRFDSEKAGDREVQRTMLELLNQLDGFQPNQVKVIAAT
NRVDILDPALLRSGRLDRKIEFPMPNEEARARIMQHSRKMNVSVDVNYEELARCTDDFNGAQCK
AVCVEAGMIALRRGATELTHEDYMEGILEVQAKKKANLQYYA

Host

Rabbit

Reactivity

Human

Quality Control Testing

Antibody reactive against mammalian transfected lysate.

Storage Buffer

In 1x PBS, pH 7.4

Storage Instruction

Store at -20°C or lower. Aliquot to avoid repeated freezing and thawing.

Applications

- Western Blot (Transfected lysate)

Western Blot analysis of PSMC3 expression in transfected 293T cell line ([H00005702-T01](#)) by PSMC3 MaxPab polyclonal antibody.

Lane 1: PSMC3 transfected lysate(49.20 KDa).

Lane 2: Non-transfected lysate.

[Protocol Download](#)

Gene Info — PSMC3

Entrez GeneID [5702](#)

GeneBank Accession# [NM_002804.3](#)

Protein Accession# [NP_002795.2](#)

Gene Name PSMC3

Gene Alias MGC8487, TBP1

Gene Description proteasome (prosome, macropain) 26S subunit, ATPase, 3

Omim ID [186852](#)

Gene Ontology [Hyperlink](#)

Gene Summary

The 26S proteasome is a multicatalytic proteinase complex with a highly ordered structure composed of 2 complexes, a 20S core and a 19S regulator. The 20S core is composed of 4 rings of 28 non-identical subunits; 2 rings are composed of 7 alpha subunits and 2 rings are composed of 7 beta subunits. The 19S regulator is composed of a base, which contains 6 ATPase subunits and 2 non-ATPase subunits, and a lid, which contains up to 10 non-ATPase subunits. Proteasomes are distributed throughout eukaryotic cells at a high concentration and cleave peptides in an ATP/ubiquitin-dependent process in a non-lysosomal pathway. An essential function of a modified proteasome, the immunoproteasome, is the processing of class I MHC peptides. This gene encodes one of the ATPase subunits, a member of the triple-A family of ATPases that have chaperone-like activity. This subunit may compete with PSMC2 for binding to the HIV tat protein to regulate the interaction between the viral protein and the transcription complex. A pseudogene has been identified on chromosome 9. [provided by RefSeq]

Other Designations

Tat-binding protein 1|human immunodeficiency virus tat transactivator binding protein-1|proteasome 26S ATPase subunit 3|proteasome subunit P50

Pathway

- [Proteasome](#)