

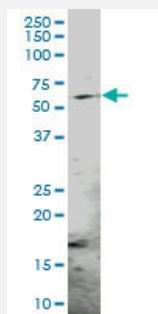
MaxPab®

PSMC3 purified MaxPab mouse polyclonal antibody (B01P)

Catalog # H00005702-B01P

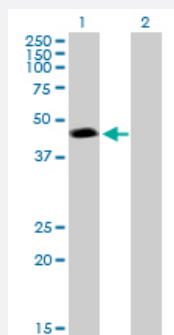
Size 50 ug

Applications



Western Blot (Tissue lysate)

PSMC3 MaxPab polyclonal antibody. Western Blot analysis of PSMC3 expression in rat brain.



Western Blot (Transfected lysate)

Western Blot analysis of PSMC3 expression in transfected 293T cell line ([H00005702-T01](#)) by PSMC3 MaxPab polyclonal antibody.

Lane 1: PSMC3 transfected lysate(48.29 KDa).

Lane 2: Non-transfected lysate.

Specification

Product Description

Mouse polyclonal antibody raised against a full-length human PSMC3 protein.

Immunogen

PSMC3 (NP_002795.2, 1 a.a. ~ 439 a.a) full-length human protein.

Sequence

MNLLPNIESPVTRQEKMATVWDEAEQDGIGEEVLKMSTEEIIQRTRLLDSEIKIMKSEVLRVTHELQ
AMKDKIKENSEKIKVNKTLPLYLSNVIELLDVDPNDQEEDGANIDLDSQRKGKCAVIKTSTRQTYFL
PVIGLVDAEKLKPGDLVGVNKDSYLILETLPTDYDSRVKAMEVDERPTEQYSDIGGLDKQIQELVE
AIVLPMNHKEKFENLGIQPPKGVLMYGPPGTGKTLLARACAAQTKATFLKLAGPQLVQMFIGDGA
KLVRDAFALAKEKAPSIIFIDELDAIGTKRFDSEKAGDREVQRTMLELLNQLDGFQPNQVVKVIAAT
NRVDILDPAALLRSGRLDRKIEFPMPNNEEARARIMQIHSRKMNVS PDVNYEELARCTDDFNGAQCK
AVCVEAGMIALRRGATELTHEDYMEGILEVQAKKKANLQYYA

Host	Mouse
Reactivity	Human, Rat
Quality Control Testing	Antibody reactive against mammalian transfected lysate.
Storage Buffer	In 1x PBS, pH 7.4
Storage Instruction	Store at -20°C or lower. Aliquot to avoid repeated freezing and thawing.

Applications

- Western Blot (Tissue lysate)

PSMC3 MaxPab polyclonal antibody. Western Blot analysis of PSMC3 expression in rat brain.

[Protocol Download](#)

- Western Blot (Transfected lysate)

Western Blot analysis of PSMC3 expression in transfected 293T cell line ([H00005702-T01](#)) by PSMC3 MaxPab polyclonal antibody.

Lane 1: PSMC3 transfected lysate(48.29 KDa).

Lane 2: Non-transfected lysate.

[Protocol Download](#)

Gene Info — PSMC3

Entrez GeneID	5702
GeneBank Accession#	NM_002804.3
Protein Accession#	NP_002795.2
Gene Name	PSMC3
Gene Alias	MGC8487, TBP1
Gene Description	proteasome (prosome, macropain) 26S subunit, ATPase, 3
Omim ID	186852
Gene Ontology	Hyperlink

Gene Summary

The 26S proteasome is a multicatalytic proteinase complex with a highly ordered structure composed of 2 complexes, a 20S core and a 19S regulator. The 20S core is composed of 4 rings of 28 non-identical subunits; 2 rings are composed of 7 alpha subunits and 2 rings are composed of 7 beta subunits. The 19S regulator is composed of a base, which contains 6 ATPase subunits and 2 non-ATPase subunits, and a lid, which contains up to 10 non-ATPase subunits. Proteasomes are distributed throughout eukaryotic cells at a high concentration and cleave peptides in an ATP/ubiquitin-dependent process in a non-lysosomal pathway. An essential function of a modified proteasome, the immunoproteasome, is the processing of class I MHC peptides. This gene encodes one of the ATPase subunits, a member of the triple-A family of ATPases that have chaperone-like activity. This subunit may compete with PSMC2 for binding to the HIV tat protein to regulate the interaction between the viral protein and the transcription complex. A pseudogene has been identified on chromosome 9. [provided by RefSeq]

Other Designations

Tat-binding protein 1|human immunodeficiency virus tat transactivator binding protein-1|proteasome 26S ATPase subunit 3|proteasome subunit P50

Pathway

- [Proteasome](#)