

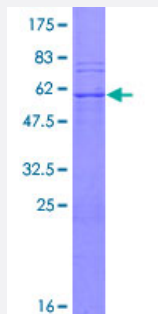
Full-Length

# PSMB7 (Human) Recombinant Protein (P01)

Catalog # H00005695-P01

Size 25 ug, 10 ug

## Applications



## Specification

### Product Description

Human PSMB7 full-length ORF ( NP\_002790.1, 1 a.a. - 277 a.a.) recombinant protein with GST-tag at N-terminal.

### Sequence

MAAVSVYAPPVGGFSFDNCRRNAVLEADFAKRGYKLPKVRKTGTTIAGVVYKDGMLGADTRATE  
GMVVADKNCISKIHFISPNIYCCGAGTAADTDMTTLISSNLELHSLSTGRLPRVVTANRMLKQMLF  
RYQGYIGAALVLGGVDVTGPHLYSIYPHGSTDKLPYVTMGSGSLAAMAVFEDKFRPDMEEEEAKN  
LVSEAAIAGIFNDLGSGSNIDLCVISKNKLDFLRPYTPNKKGTRLGRYRCEKGTTAVLTEKITPLEIE  
VLEETVQTMDS

### Host

Wheat Germ (in vitro)

### Theoretical MW (kDa)

56.4

### Interspecies Antigen Sequence

Mouse (96); Rat (95)

### Preparation Method

[in vitro wheat germ expression system](#)

### Purification

Glutathione Sepharose 4 Fast Flow

### Quality Control Testing

12.5% SDS-PAGE Stained with Coomassie Blue.

### Storage Buffer

50 mM Tris-HCl, 10 mM reduced Glutathione, pH=8.0 in the elution buffer.

**Storage Instruction**

Store at -80°C. Aliquot to avoid repeated freezing and thawing.

**Note**

Best use within three months from the date of receipt of this protein.

## Applications

- Enzyme-linked Immunoabsorbent Assay
- Western Blot (Recombinant protein)
- Antibody Production
- Protein Array

## Gene Info — PSMB7

**Entrez GeneID**[5695](#)**GeneBank Accession#**[NM\\_002799.2](#)**Protein Accession#**[NP\\_002790.1](#)**Gene Name**

PSMB7

**Gene Alias**

Z

**Gene Description**

proteasome (prosome, macropain) subunit, beta type, 7

**Omim ID**[604030](#)**Gene Ontology**[Hyperlink](#)**Gene Summary**

The proteasome is a multicatalytic proteinase complex with a highly ordered ring-shaped 20S core structure. The core structure is composed of 4 rings of 28 non-identical subunits; 2 rings are composed of 7 alpha subunits and 2 rings are composed of 7 beta subunits. Proteasomes are distributed throughout eukaryotic cells at a high concentration and cleave peptides in an ATP/ubiquitin-dependent process in a non-lysosomal pathway. An essential function of a modified proteasome, the immunoproteasome, is the processing of class I MHC peptides. This gene encodes a member of the proteasome B-type family, also known as the T1B family, that is a 20S core beta subunit in the proteasome. Expression of this catalytic subunit is downregulated by gamma interferon and proteolytic processing is required to generate a mature subunit. This subunit is not present in the immunoproteasome and is replaced by catalytic subunit 2i (proteasome beta 10 subunit). [provided by RefSeq]

**Other Designations**

OTTHUMP00000022798|macropain chain Z|multicatalytic endopeptidase complex chain Z|proteasome beta 7 subunit|proteasome catalytic subunit 2|proteasome subunit Z|proteasome subunit alpha|proteasome subunit beta 7

**Pathway**

- [Proteasome](#)

**Disease**

- [Kidney Failure](#)
- [Tobacco Use Disorder](#)