

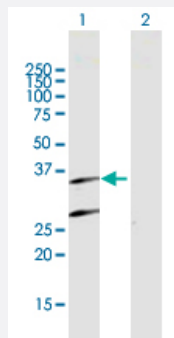
MaxPab®

## PSMB7 purified MaxPab mouse polyclonal antibody (B03P)

Catalog # H00005695-B03P

Size 50 ug

### Applications

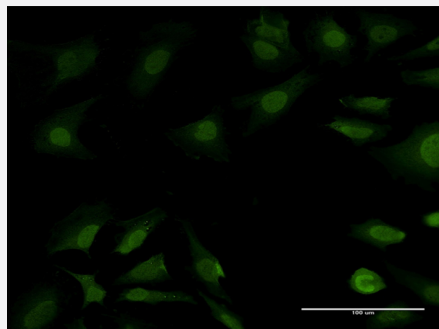


#### Western Blot (Transfected lysate)

Western Blot analysis of PSMB7 expression in transfected 293T cell line ([H00005695-T04](#)) by PSMB7 MaxPab polyclonal antibody.

Lane 1: PSMB7 transfected lysate(30.00 KDa).

Lane 2: Non-transfected lysate.



#### Immunofluorescence

Immunofluorescence of purified MaxPab antibody to PSMB7 on HeLa cell. [antibody concentration 10 ug/ml]

### Specification

#### Product Description

Mouse polyclonal antibody raised against a full-length human PSMB7 protein.

#### Immunogen

PSMB7 (NP\_002790.1, 1 a.a. ~ 277 a.a) full-length human protein.

#### Sequence

MAAVSVYAPPVGGFSFDNCRRNAVLEADFAKRGYKLPKVRKTGTTIAGVVYKDGMLGADTRATE  
GMVVADKNCISKIHFISPNIYCCGAGTAADTDMTQLISSNLELHSLSTGRLPRVVTANRMLKQMLF  
RYQGYIGAALVLGGVDVTGPHLYSIYPHGSTDKLPYVTMGSGSLAAMAVFEDKFRPDMEEEEAKN  
LVSEAAAGIFNDLGSGSNIDLCVISKNKLDFLRPYTPVNPKNKGTRLGRYRCEKGTTAVLTEKITPLEIE  
VLEETVQTMDS

#### Host

Mouse

Reactivity	Human
Interspecies Antigen Sequence	Mouse (96); Rat (95)
Quality Control Testing	Antibody reactive against mammalian transfected lysate.
Storage Buffer	In 1x PBS, pH 7.4
Storage Instruction	Store at -20°C or lower. Aliquot to avoid repeated freezing and thawing.

## Applications

- Western Blot (Transfected lysate)

Western Blot analysis of PSMB7 expression in transfected 293T cell line ([H00005695-T04](#)) by PSMB7 MaxPab polyclonal antibody.

Lane 1: PSMB7 transfected lysate(30.00 KDa).

Lane 2: Non-transfected lysate.

[Protocol Download](#)

- Immunofluorescence

Immunofluorescence of purified MaxPab antibody to PSMB7 on HeLa cell. [antibody concentration 10 ug/ml]

## Gene Info — PSMB7

Entrez GeneID	<a href="#">5695</a>
GeneBank Accession#	<a href="#">NM_002799.2</a>
Protein Accession#	<a href="#">NP_002790.1</a>
Gene Name	PSMB7
Gene Alias	Z
Gene Description	proteasome (prosome, macropain) subunit, beta type, 7
Omim ID	<a href="#">604030</a>
Gene Ontology	<a href="#">Hyperlink</a>

**Gene Summary**

The proteasome is a multicatalytic proteinase complex with a highly ordered ring-shaped 20S core structure. The core structure is composed of 4 rings of 28 non-identical subunits; 2 rings are composed of 7 alpha subunits and 2 rings are composed of 7 beta subunits. Proteasomes are distributed throughout eukaryotic cells at a high concentration and cleave peptides in an ATP/ubiquitin-dependent process in a non-lysosomal pathway. An essential function of a modified proteasome, the immunoproteasome, is the processing of class I MHC peptides. This gene encodes a member of the proteasome B-type family, also known as the T1B family, that is a 20S core beta subunit in the proteasome. Expression of this catalytic subunit is downregulated by gamma interferon and proteolytic processing is required to generate a mature subunit. This subunit is not present in the immunoproteasome and is replaced by catalytic subunit 2i (proteasome beta 10 subunit). [provided by RefSeq]

**Other Designations**

OTTHUMP00000022798|macropain chain Z|multicatalytic endopeptidase complex chain Z|proteasome beta 7 subunit|proteasome catalytic subunit 2|proteasome subunit Z|proteasome subunit alpha|proteasome subunit beta 7

**Pathway**

- [Proteasome](#)

**Disease**

- [Kidney Failure](#)
- [Tobacco Use Disorder](#)