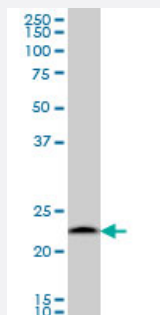


PSMB6 monoclonal antibody (M02), clone S51

Catalog # H00005694-M02

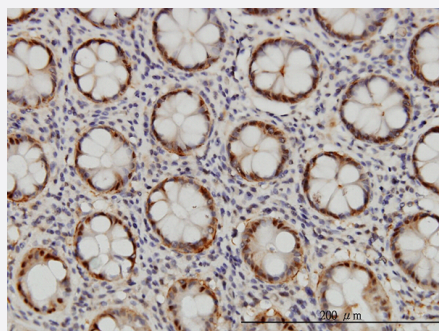
Size 100 ug

Applications



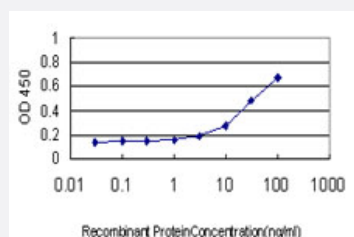
Western Blot (Cell lysate)

PSMB6 monoclonal antibody (M02), clone S51 Western Blot analysis of PSMB6 expression in A-431 (Cat # L015V1).



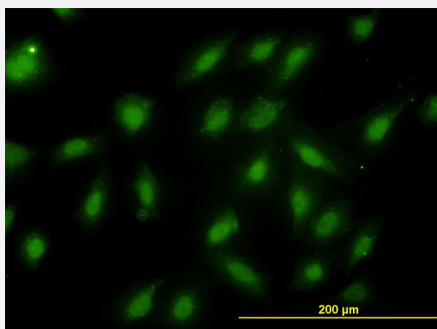
Immunohistochemistry (Formalin/PFA-fixed paraffin-embedded sections)

Immunoperoxidase of monoclonal antibody to PSMB6 on formalin-fixed paraffin-embedded human colon. [antibody concentration 1 ug/ml]



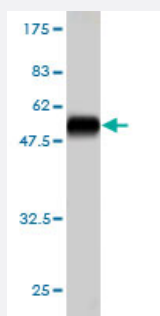
Sandwich ELISA (Recombinant protein)

Detection limit for recombinant GST tagged PSMB6 is approximately 0.3ng/ml as a capture antibody.



Immunofluorescence

Immunofluorescence of monoclonal antibody to PSMB6 on HeLa cell. [antibody concentration 10 ug/ml]



Western Blot detection against Immunogen (52.03 KDa) .

Specification

Product Description	Mouse monoclonal antibody raised against a full length recombinant PSMB6.
Immunogen	PSMB6 (AAH00835, 1 a.a. ~ 239 a.a) full-length recombinant protein with GST tag. MW of the GST tag alone is 26 KDa.
Sequence	MAATLLAARGAGPAPAWGPEAFTPDWESREVSTGTTIMAVQFDGGVVLGADSRTTTGSYIANRV TDELTPIHDRIFCCRSRSAADTQAVADAVTYQLGFHSIELNEPPLVHTAASLFKEMCYRYREDLMA GIIAGWDPQEGGQVYSVPMGGMMVRQSFAIGGSGSSYYGYVDATYREGMTKEECLQFTANALAL AMERDGSSGGVIRLAAIAESGVERQVLLGDQIPKFAVATLPPA
Host	Mouse
Reactivity	Human
Interspecies Antigen Sequence	Mouse (94)
Isotype	IgG2b Kappa
Quality Control Testing	Antibody Reactive Against Recombinant Protein. Western Blot detection against Immunogen (52.03 KDa) .
Storage Buffer	In 1x PBS, pH 7.4
Storage Instruction	Store at -20°C or lower. Aliquot to avoid repeated freezing and thawing.

Applications

- Western Blot (Cell lysate)

PSMB6 monoclonal antibody (M02), clone S51 Western Blot analysis of PSMB6 expression in A-431 (Cat # L015V1).

[Protocol Download](#)

- Western Blot (Recombinant protein)

[Protocol Download](#)

- Immunohistochemistry (Formalin/PFA-fixed paraffin-embedded sections)

Immunoperoxidase of monoclonal antibody to PSMB6 on formalin-fixed paraffin-embedded human colon. [antibody concentration 1 ug/ml]

[Protocol Download](#)

- Sandwich ELISA (Recombinant protein)

Detection limit for recombinant GST tagged PSMB6 is approximately 0.3ng/ml as a capture antibody.

[Protocol Download](#)

- ELISA

- Immunofluorescence

Immunofluorescence of monoclonal antibody to PSMB6 on HeLa cell. [antibody concentration 10 ug/ml]

Gene Info — PSMB6

Entrez GeneID	5694
---------------	----------------------

GeneBank Accession#	BC000835
---------------------	--------------------------

Protein Accession#	AAH00835
--------------------	--------------------------

Gene Name	PSMB6
-----------	-------

Gene Alias	DELTA, LMPY, MGC5169, Y
------------	-------------------------

Gene Description	proteasome (prosome, macropain) subunit, beta type, 6
------------------	---

Omim ID	600307
---------	------------------------

Gene Ontology	Hyperlink
---------------	---------------------------

Gene Summary

The proteasome is a multicatalytic proteinase complex with a highly ordered ring-shaped 20S core structure. The core structure is composed of 4 rings of 28 non-identical subunits; 2 rings are composed of 7 alpha subunits and 2 rings are composed of 7 beta subunits. Proteasomes are distributed throughout eukaryotic cells at a high concentration and cleave peptides in an ATP/ubiquitin-dependent process in a non-lysosomal pathway. An essential function of a modified proteasome, the immunoproteasome, is the processing of class I MHC peptides. This gene encodes a member of the proteasome B-type family, also known as the T1B family, that is a 20S core beta subunit in the proteasome. This catalytic subunit is not present in the immunoproteasome and is replaced by catalytic subunit 1i (proteasome beta 9 subunit). [provided by RefSeq]

Other Designations

PSY large multifunctional protease Y|macropain delta chain|multicatalytic endopeptidase complex delta chain|proteasome beta 6 subunit|proteasome catalytic subunit 1|proteasome delta chain|proteasome subunit Y|proteasome subunit beta 6|proteasome subunit d

Pathway

- [Proteasome](#)

Disease

- [Kidney Failure](#)