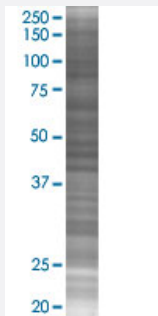


PSMB5 293T Cell Transient Overexpression Lysate(Denatured)

Catalog # H00005693-T04

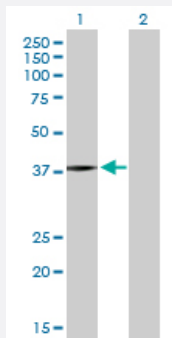
Size 100 uL

Applications



SDS-PAGE Gel

PSMB5 transfected lysate.



Western Blot

Lane 1: PSMB5 transfected lysate (28.50 KDa)

Lane 2: Non-transfected lysate.

Specification

Transfected Cell Line 293T

Plasmid pCMV-PSMB5 full-length

Host Human

Theoretical MW (kDa) 28.5

Quality Control Testing Transient overexpression cell lysate was tested with Anti-PSMB5 antibody ([H00005693-D01P](#)) by Western Blots.
 SDS-PAGE Gel
 PSMB5 transfected lysate.
 Western Blot
 Lane 1: PSMB5 transfected lysate (28.50 KDa)
 Lane 2: Non-transfected lysate.

Storage Buffer

1X Sample Buffer (50 mM Tris-HCl, 2% SDS, 10% glycerol, 300 mM 2-mercaptoethanol, 0.01% Bromophenol blue)

Storage Instruction

Store at -80°C. Aliquot to avoid repeated freezing and thawing.

Applications

- Western Blot

Gene Info — PSMB5

Entrez GeneID[5693](#)**GeneBank Accession#**[NM_002797.2](#)**Protein Accession#**[NP_002788.1](#)**Gene Name**

PSMB5

Gene Alias

LMPX, MB1, MGC104214, X

Gene Description

proteasome (prosome, macropain) subunit, beta type, 5

Omim ID[600306](#)**Gene Ontology**[Hyperlink](#)**Gene Summary**

The proteasome is a multicatalytic proteinase complex with a highly ordered ring-shaped 20S core structure. The core structure is composed of 4 rings of 28 non-identical subunits; 2 rings are composed of 7 alpha subunits and 2 rings are composed of 7 beta subunits. Proteasomes are distributed throughout eukaryotic cells at a high concentration and cleave peptides in an ATP/ubiquitin-dependent process in a non-lysosomal pathway. An essential function of a modified proteasome, the immunoproteasome, is the processing of class I MHC peptides. This gene encodes a member of the proteasome B-type family, also known as the T1B family, that is a 20S core beta subunit in the proteasome. This catalytic subunit is not present in the immunoproteasome and is replaced by catalytic subunit 3i (proteasome beta 8 subunit). Multiple transcript variants encoding different isoforms have been found for this gene. [provided by RefSeq]

Other Designations

PSX large multifunctional protease X|macropain epsilon chain|multicatalytic endopeptidase complex epsilon chain|proteasome beta 5 subunit|proteasome catalytic subunit 3|proteasome chain 6|proteasome epsilon chain|proteasome subunit MB1|proteasome subunit

Pathway

- [Proteasome](#)