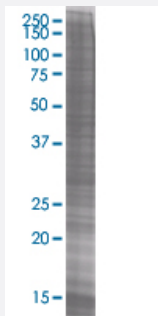


# PSMB5 293T Cell Transient Overexpression Lysate(Denatured)

Catalog # H00005693-T01

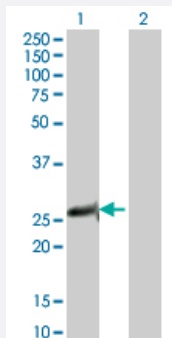
Size 100 uL

## Applications



### SDS-PAGE Gel

PSMB5 transfected lysate



### Western Blot

Lane 1: PSMB5 transfected lysate ( 29.04 KDa).

Lane 2: Non-transfected lysate.

## Specification

**Transfected Cell Line** 293T

**Plasmid** pCMV-PSMB5 full-length

**Host** Human

**Theoretical MW (kDa)** 29.04

**Quality Control Testing** Transient overexpression cell lysate was tested with Anti-PSMB5 antibody ([H00005693-B01](#)) by Western Blots.  
SDS-PAGE Gel  
PSMB5 transfected lysate  
Western Blot  
Lane 1: PSMB5 transfected lysate ( 29.04 KDa).  
Lane 2: Non-transfected lysate.

Storage Buffer	1X Sample Buffer (50 mM Tris-HCl, 2% SDS, 10% glycerol, 300 mM 2-mercaptoethanol, 0.01% Bromophenol blue)
Storage Instruction	Store at -80°C. Aliquot to avoid repeated freezing and thawing.

## Applications

- Western Blot

## Gene Info — PSMB5

Entrez GeneID	<a href="#">5693</a>
GeneBank Accession#	<a href="#">BC057840</a>
Protein Accession#	<a href="#">AAH57840</a>
Gene Name	PSMB5
Gene Alias	LMPX, MB1, MGC104214, X
Gene Description	proteasome (prosome, macropain) subunit, beta type, 5
Omim ID	<a href="#">600306</a>
Gene Ontology	<a href="#">Hyperlink</a>

Gene Summary	<p>The proteasome is a multicatalytic proteinase complex with a highly ordered ring-shaped 20S core structure. The core structure is composed of 4 rings of 28 non-identical subunits; 2 rings are composed of 7 alpha subunits and 2 rings are composed of 7 beta subunits. Proteasomes are distributed throughout eukaryotic cells at a high concentration and cleave peptides in an ATP/ubiquitin-dependent process in a non-lysosomal pathway. An essential function of a modified proteasome, the immunoproteasome, is the processing of class I MHC peptides. This gene encodes a member of the proteasome B-type family, also known as the T1B family, that is a 20S core beta subunit in the proteasome. This catalytic subunit is not present in the immunoproteasome and is replaced by catalytic subunit 3i (proteasome beta 8 subunit). Multiple transcript variants encoding different isoforms have been found for this gene. [provided by RefSeq]</p>
--------------	--

Other Designations	PSX large multifunctional protease X macropain epsilon chain multicatalytic endopeptidase complex epsilon chain proteasome beta 5 subunit proteasome catalytic subunit 3 proteasome chain 6 proteasome epsilon chain proteasome subunit MB1 proteasome subunit
--------------------	--

## Pathway

- [Proteasome](#)