

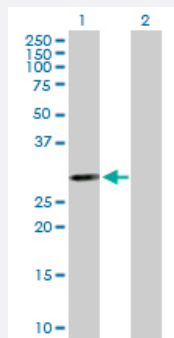
MaxPab®

## PSMB5 purified MaxPab mouse polyclonal antibody (B01P)

Catalog # H00005693-B01P

Size 50 ug

### Applications

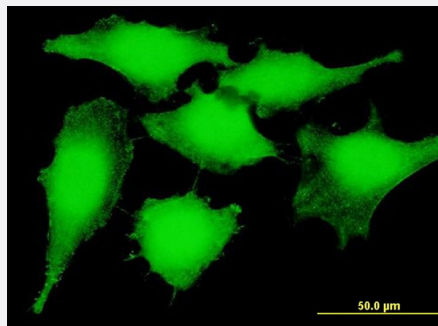


#### Western Blot (Transfected lysate)

Western Blot analysis of PSMB5 expression in transfected 293T cell line ([H00005693-T03](#)) by PSMB5 MaxPab polyclonal antibody.

Lane 1: PSMB5 transfected lysate(29.04 KDa).

Lane 2: Non-transfected lysate.



#### Immunofluorescence

Immunofluorescence of purified MaxPab antibody to PSMB5 on HeLa cell. [antibody concentration 10 ug/ml]

### Specification

#### Product Description

Mouse polyclonal antibody raised against a full-length human PSMB5 protein.

#### Immunogen

PSMB5 (AAH57840, 1 a.a. ~ 263 a.a) full-length human protein.

#### Sequence

MALASVLERPLPVNQRGFFGLGGRADLLDLGPGSLSDGLSLAAPGWGVPEEPGIEMLHGTTTLA  
FKFRHGVVAADSRATAGAYIASQTVKKVIEINPYLLGTMAGGAADCSFWERLLARQCRIYELRNKE  
RISVAAASKLLANMVYQYKGMGLSMGTMICGWDKRGPGLYYVDSEGNRISGATFSVGSGSVYAY  
GVMDRGYSYDLEVEQAYDLARRAIQATYRDAYSGGAVNLYHVREDGWIRVSSDNVADLHEKYS  
GSTP

#### Host

Mouse

Reactivity	Human
Quality Control Testing	Antibody reactive against mammalian transfected lysate.
Storage Buffer	In 1x PBS, pH 7.4
Storage Instruction	Store at -20°C or lower. Aliquot to avoid repeated freezing and thawing.

## Applications

- Western Blot (Transfected lysate)

Western Blot analysis of PSMB5 expression in transfected 293T cell line ([H00005693-T03](#)) by PSMB5 MaxPab polyclonal antibody.

Lane 1: PSMB5 transfected lysate(29.04 KDa).

Lane 2: Non-transfected lysate.

[Protocol Download](#)

- Immunofluorescence

Immunofluorescence of purified MaxPab antibody to PSMB5 on HeLa cell. [antibody concentration 10 ug/ml]

## Gene Info — PSMB5

Entrez GeneID	<a href="#">5693</a>
GeneBank Accession#	<a href="#">BC057840</a>
Protein Accession#	<a href="#">AAH57840</a>
Gene Name	PSMB5
Gene Alias	LMPX, MB1, MGC104214, X
Gene Description	proteasome (prosome, macropain) subunit, beta type, 5
Omim ID	<a href="#">600306</a>
Gene Ontology	<a href="#">Hyperlink</a>

**Gene Summary**

The proteasome is a multicatalytic proteinase complex with a highly ordered ring-shaped 20S core structure. The core structure is composed of 4 rings of 28 non-identical subunits; 2 rings are composed of 7 alpha subunits and 2 rings are composed of 7 beta subunits. Proteasomes are distributed throughout eukaryotic cells at a high concentration and cleave peptides in an ATP/ubiquitin-dependent process in a non-lysosomal pathway. An essential function of a modified proteasome, the immunoproteasome, is the processing of class I MHC peptides. This gene encodes a member of the proteasome B-type family, also known as the T1B family, that is a 20S core beta subunit in the proteasome. This catalytic subunit is not present in the immunoproteasome and is replaced by catalytic subunit 3i (proteasome beta 8 subunit). Multiple transcript variants encoding different isoforms have been found for this gene. [provided by RefSeq]

**Other Designations**

PSX large multifunctional protease X|macropain epsilon chain|multicatalytic endopeptidase complex epsilon chain|proteasome beta 5 subunit|proteasome catalytic subunit 3|proteasome chain 6|proteasome epsilon chain|proteasome subunit MB1|proteasome subunit

## Pathway

- [Proteasome](#)