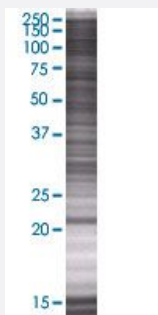


PSMB3 293T Cell Transient Overexpression Lysate(Denatured)

Catalog # H00005691-T01

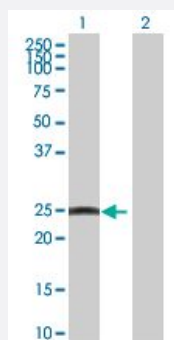
Size 100 uL

Applications



SDS-PAGE Gel

PSMB3 transfected lysate.



Western Blot

Lane 1: PSMB3 transfected lysate (22.66 KDa)

Lane 2: Non-transfected lysate.

Specification

Transfected Cell Line 293T

Plasmid pCMV-PSMB3 full-length

Host Human

Theoretical MW (kDa) 22.66

Quality Control Testing Transient overexpression cell lysate was tested with Anti-PSMB3 antibody ([H00005691-B01](#)) by Western Blots.
SDS-PAGE Gel
PSMB3 transfected lysate.
Western Blot
Lane 1: PSMB3 transfected lysate (22.66 KDa)
Lane 2: Non-transfected lysate.

Storage Buffer	1X Sample Buffer (50 mM Tris-HCl, 2% SDS, 10% glycerol, 300 mM 2-mercaptoethanol, 0.01% Bromophenol blue)
Storage Instruction	Store at -80°C. Aliquot to avoid repeated freezing and thawing.

Applications

- Western Blot

Gene Info — PSMB3

Entrez GeneID	5691
GeneBank Accession#	NM_002795.2
Protein Accession#	NP_002786.2
Gene Name	PSMB3
Gene Alias	HC10-II, MGC4147
Gene Description	proteasome (prosome, macropain) subunit, beta type, 3
Omim ID	602176
Gene Ontology	Hyperlink

Gene Summary	<p>The proteasome is a multicatalytic proteinase complex with a highly ordered ring-shaped 20S core structure. The core structure is composed of 4 rings of 28 non-identical subunits; 2 rings are composed of 7 alpha subunits and 2 rings are composed of 7 beta subunits. Proteasomes are distributed throughout eukaryotic cells at a high concentration and cleave peptides in an ATP/ubiquitin-dependent process in a non-lysosomal pathway. An essential function of a modified proteasome, the immunoproteasome, is the processing of class I MHC peptides. This gene encodes a member of the proteasome B-type family, also known as the T1B family, that is a 20S core beta subunit. Pseudogenes have been identified on chromosomes 2 and 12. [provided by RefSeq]</p>
--------------	---

Other Designations	proteasome beta 3 subunit proteasome chain 13 proteasome component C10-II proteasome theta chain
--------------------	--

Pathway

- [Proteasome](#)