

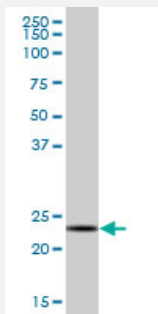
MaxPab®

PSMB3 purified MaxPab mouse polyclonal antibody (B01P)

Catalog # H00005691-B01P

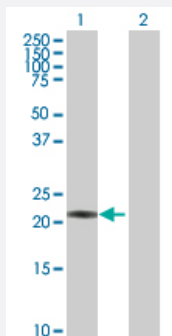
Size 50 ug

Applications



Western Blot (Tissue lysate)

PSMB3 MaxPab polyclonal antibody. Western Blot analysis of PSMB3 expression in human liver.

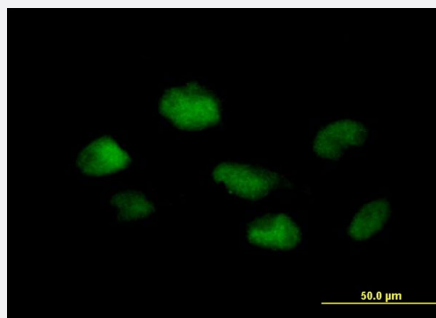


Western Blot (Transfected lysate)

Western Blot analysis of PSMB3 expression in transfected 293T cell line ([H00005691-T01](#)) by PSMB3 MaxPab polyclonal antibody.

Lane 1: PSMB3 transfected lysate(22.55 KDa).

Lane 2: Non-transfected lysate.



Immunofluorescence

Immunofluorescence of purified MaxPab antibody to PSMB3 on HeLa cell. [antibody concentration 10 ug/ml]

Specification

Product Description

Mouse polyclonal antibody raised against a full-length human PSMB3 protein.

| | |
|-------------------------|--|
| Immunogen | PSMB3 (NP_002786.2, 1 a.a. ~ 205 a.a) full-length human protein. |
| Sequence | MSIMSYNGGAVMAMKGKNCVAIAADRRFGIQAQMVTTDFQKIFPMGDRLYIGLAGLATDVQTVAQ RLKFRLNLYELKEGRQIKPYTLMMSVANLLYEKRFGPYTEPVIAGLDPKTFKPFICSLDLIGCPMVT DDFVVS GTCAEQMYGMCESLWEPNMDPDHLFETISQAMLNAVDRDAVSGMGVIVHIIKDKITTR TLKARMD |
| Host | Mouse |
| Reactivity | Human |
| Quality Control Testing | Antibody reactive against mammalian transfected lysate. |
| Storage Buffer | In 1x PBS, pH 7.4 |
| Storage Instruction | Store at -20°C or lower. Aliquot to avoid repeated freezing and thawing. |

Applications

- Western Blot (Tissue lysate)

PSMB3 MaxPab polyclonal antibody. Western Blot analysis of PSMB3 expression in human liver.

[Protocol Download](#)

- Western Blot (Transfected lysate)

Western Blot analysis of PSMB3 expression in transfected 293T cell line ([H00005691-T01](#)) by PSMB3 MaxPab polyclonal antibody.

Lane 1: PSMB3 transfected lysate(22.55 KDa).

Lane 2: Non-transfected lysate.

[Protocol Download](#)

- Immunofluorescence

Immunofluorescence of purified MaxPab antibody to PSMB3 on HeLa cell. [antibody concentration 10 ug/ml]

Gene Info — PSMB3

| | |
|---------------------|-----------------------------|
| Entrez GeneID | 5691 |
| GeneBank Accession# | NM_002795.2 |
| Protein Accession# | NP_002786.2 |
| Gene Name | PSMB3 |

| | |
|--------------------|---|
| Gene Alias | HC10-II, MGC4147 |
| Gene Description | proteasome (prosome, macropain) subunit, beta type, 3 |
| Omim ID | 602176 |
| Gene Ontology | Hyperlink |
| Gene Summary | <p>The proteasome is a multicatalytic proteinase complex with a highly ordered ring-shaped 20S core structure. The core structure is composed of 4 rings of 28 non-identical subunits; 2 rings are composed of 7 alpha subunits and 2 rings are composed of 7 beta subunits. Proteasomes are distributed throughout eukaryotic cells at a high concentration and cleave peptides in an ATP/ubiquitin-dependent process in a non-lysosomal pathway. An essential function of a modified proteasome, the immunoproteasome, is the processing of class I MHC peptides. This gene encodes a member of the proteasome B-type family, also known as the T1B family, that is a 20S core beta subunit. Pseudogenes have been identified on chromosomes 2 and 12. [provided by RefSeq]</p> |
| Other Designations | proteasome beta 3 subunit proteasome chain 13 proteasome component C10-II proteasome theta chain |

Pathway

- [Proteasome](#)