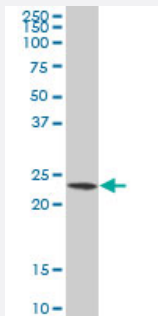


PSMB3 polyclonal antibody (A01)

Catalog # H00005691-A01

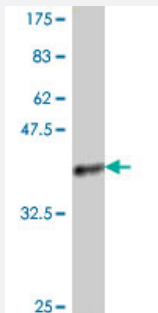
Size 50 uL

Applications



Western Blot (Cell lysate)

PSMB3 polyclonal antibody (A01), Lot # 051011JC01 Western Blot analysis of PSMB3 expression in HL-60 (Cat # L014V1).



Western Blot detection against Immunogen (37.11 KDa) .

Specification

Product Description	Mouse polyclonal antibody raised against a partial recombinant PSMB3.
Immunogen	PSMB3 (AAH13008, 106 a.a. ~ 205 a.a) partial recombinant protein with GST tag.
Sequence	EPVIAGLDPKTFKPFICSLDLIGCPMVTDDFVVS GTCAEQMYGMCESLWEPNMDPDH L FETISQA MLNAVDRDAVSGMGVIVHIEKDKITRTLKARMD
Host	Mouse
Reactivity	Human
Quality Control Testing	Antibody Reactive Against Recombinant Protein. Western Blot detection against Immunogen (37.11 KDa) .

Storage Buffer	50 % glycerol
----------------	---------------

Storage Instruction	Store at -20°C or lower. Aliquot to avoid repeated freezing and thawing.
---------------------	--

Applications

- Western Blot (Cell lysate)

PSMB3 polyclonal antibody (A01), Lot # 051011JC01 Western Blot analysis of PSMB3 expression in HL-60 (Cat # L014V1).

[Protocol Download](#)

- Western Blot (Recombinant protein)

[Protocol Download](#)

- ELISA

Gene Info — PSMB3

Entrez GeneID	5691
---------------	----------------------

GeneBank Accession#	BC013008
---------------------	--------------------------

Protein Accession#	AAH13008
--------------------	--------------------------

Gene Name	PSMB3
-----------	-------

Gene Alias	HC10-II, MGC4147
------------	------------------

Gene Description	proteasome (prosome, macropain) subunit, beta type, 3
------------------	---

Omim ID	602176
---------	------------------------

Gene Ontology	Hyperlink
---------------	---------------------------

Gene Summary	<p>The proteasome is a multicatalytic proteinase complex with a highly ordered ring-shaped 20S core structure. The core structure is composed of 4 rings of 28 non-identical subunits; 2 rings are composed of 7 alpha subunits and 2 rings are composed of 7 beta subunits. Proteasomes are distributed throughout eukaryotic cells at a high concentration and cleave peptides in an ATP/ubiquitin-dependent process in a non-lysosomal pathway. An essential function of a modified proteasome, the immunoproteasome, is the processing of class I MHC peptides. This gene encodes a member of the proteasome B-type family, also known as the T1B family, that is a 20S core beta subunit. Pseudogenes have been identified on chromosomes 2 and 12. [provided by RefSeq]</p>
--------------	---

Other Designations

proteasome beta 3 subunit|proteasome chain 13|proteasome component C10-III|proteasome thet
a chain

Pathway

- [Proteasome](#)