

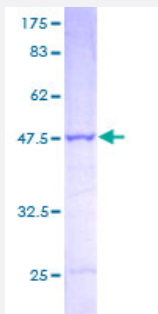
Full-Length

PSMB2 (Human) Recombinant Protein (P01)

Catalog # H00005690-P01

Size 25 ug, 10 ug

Applications



Specification

Product Description	Human PSMB2 full-length ORF (AAH00268, 1 a.a. - 201 a.a.) recombinant protein with GST-tag at N-terminal.
Sequence	MEYLIGIQGPDYVLVASDRVAASNIVQMKDDHDKMFKMSEKILLLCVGEAGDTVQFAEYIQKNVQL YKMRNGYELSPATAANFTRRLADCLRSRTPYHVNLLLAGYDEHEGPALYYMDYLAALAKAPFAA HGYGAFLTLSILDYYTPTISRERAVELLRKCLEELQKRIFILNLPTFSVRIIDKNGIHDLDNISFPKQGS
Host	Wheat Germ (in vitro)
Theoretical MW (kDa)	47.85
Preparation Method	in vitro wheat germ expression system
Purification	Glutathione Sepharose 4 Fast Flow
Quality Control Testing	12.5% SDS-PAGE Stained with Coomassie Blue.
Storage Buffer	50 mM Tris-HCl, 10 mM reduced Glutathione, pH=8.0 in the elution buffer.
Storage Instruction	Store at -80°C. Aliquot to avoid repeated freezing and thawing.
Note	Best use within three months from the date of receipt of this protein.

Applications

- Enzyme-linked Immunoabsorbent Assay
- Western Blot (Recombinant protein)
- Antibody Production
- Protein Array

Gene Info — PSMB2

Entrez GeneID	5690
GeneBank Accession#	BC000268
Protein Accession#	AAH00268
Gene Name	PSMB2
Gene Alias	HC7-I, MGC104215, MGC126885
Gene Description	proteasome (prosome, macropain) subunit, beta type, 2
Omim ID	602175
Gene Ontology	Hyperlink
Gene Summary	<p>The proteasome is a multicatalytic proteinase complex with a highly ordered ring-shaped 20S core structure. The core structure is composed of 4 rings of 28 non-identical subunits; 2 rings are composed of 7 alpha subunits and 2 rings are composed of 7 beta subunits. Proteasomes are distributed throughout eukaryotic cells at a high concentration and cleave peptides in an ATP/ubiquitin-dependent process in a non-lysosomal pathway. An essential function of a modified proteasome, the immunoproteasome, is the processing of class I MHC peptides. This gene encodes a member of the proteasome B-type family, also known as the T1B family, that is a 20S core beta subunit. [provided by RefSeq]</p>
Other Designations	OTTHUMP00000004345 macropain subunit C7- multicatalytic endopeptidase complex subunit C7-1 proteasome beta 2 subunit proteasome component C7- proteasome subunit, beta type, 2

Pathway

- [Proteasome](#)