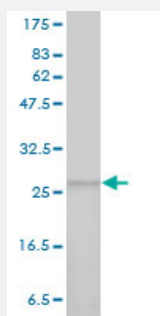


PSMA7 monoclonal antibody (M01), clone 1A10-3G12

Catalog # H00005688-M01

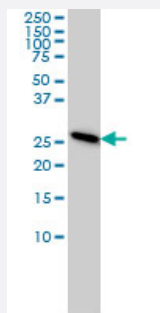
Size 100 ug

Applications



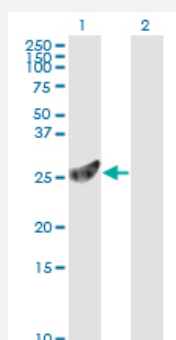
Western Blot (Tissue lysate)

PSMA7 monoclonal antibody (M01), clone 1A10-3G12. Western Blot analysis of PSMA7 expression in human omentum, serous carcinoma.



Western Blot (Cell lysate)

PSMA7 monoclonal antibody (M01), clone 1A10-3G12 Western Blot analysis of PSMA7 expression in HeLa (Cat # L013V1).

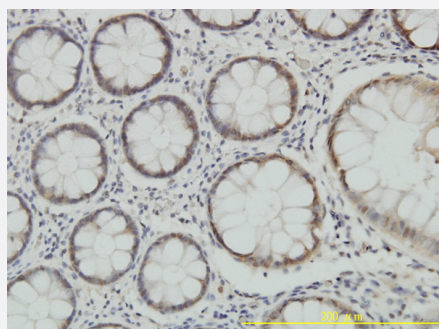


Western Blot (Transfected lysate)

Western Blot analysis of PSMA7 expression in transfected 293T cell line by PSMA7 monoclonal antibody (M01), clone 1A10-3G12.

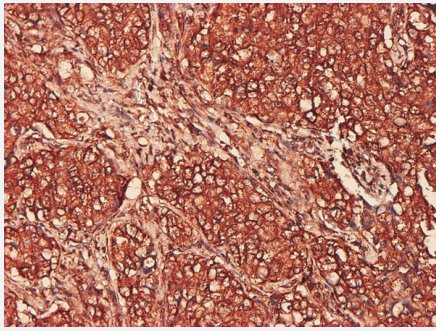
Lane 1: PSMA7 transfected lysate (Predicted MW: 27.9 KDa).

Lane 2: Non-transfected lysate.



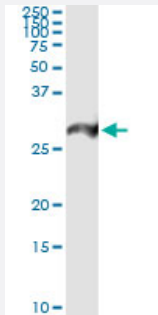
Immunohistochemistry (Formalin/PFA-fixed paraffin-embedded sections)

Immunoperoxidase of monoclonal antibody to PSMA7 on formalin-fixed paraffin-embedded human colon tissue. [antibody concentration 5 ug/ml]



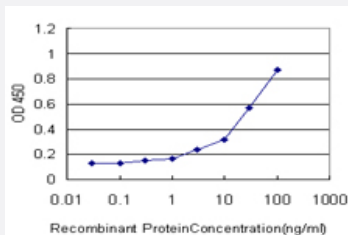
Immunohistochemistry (Formalin/PFA-fixed paraffin-embedded sections)

Immunoperoxidase of monoclonal antibody to PSMA7 on formalin-fixed paraffin-embedded human lung, adenosquamous cell carcinoma. [antibody concentration 5 ug/ml]



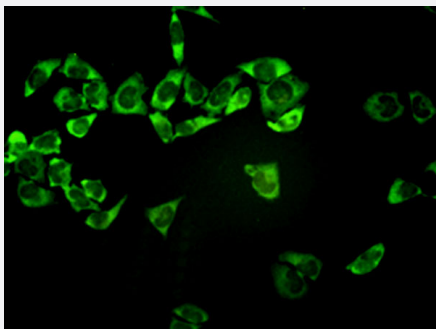
Immunoprecipitation

Immunoprecipitation of PSMA7 transfected lysate using anti-PSMA7 monoclonal antibody and Protein A Magnetic Bead, and immunoblotted with PSMA7 MaxPab rabbit polyclonal antibody.



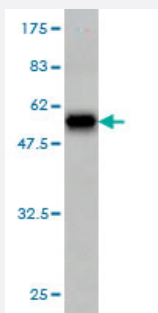
Sandwich ELISA (Recombinant protein)

Detection limit for recombinant GST tagged PSMA7 is approximately 1ng/ml as a capture antibody.



Immunofluorescence

Immunofluorescence of monoclonal antibody to PSMA7 on HeLa cell. [antibody concentration 1 ~ 10 ug/ml]



Western Blot detection against Immunogen (53.02 KDa) .

Specification

Product Description	Mouse monoclonal antibody raised against a full length recombinant PSMA7.
Immunogen	PSMA7 (AAH04427, 1 a.a. ~ 248 a.a) full-length recombinant protein with GST tag. MW of the GST tag alone is 26 KDa.
Sequence	MSYDRAITVFSPDGHLFQVEYAEAVKKGSTAVGVRGRDIVLGVEKKSVAKLQDERTVRKICAL DDNVCMAFAGLTADARVINRARVEQCQSHRLTVEDPVTVEYTRYIASLKQRYTQSNRRPFGISALI VGFDGDFGTPRLYQTDPSGTYHAWKANAIGRGAKSVREFLEKNYTDEAIETDDLTIKLVIKALLEVVQ SGGKNIELAVMRRDQSLKILNPTEEIEKYVAEIEKEKEENEKKKQKKAS
Host	Mouse
Reactivity	Human
Interspecies Antigen Sequence	Mouse (99); Rat (99)
Isotype	IgG2b Kappa
Quality Control Testing	Antibody Reactive Against Recombinant Protein. Western Blot detection against Immunogen (53.02 KDa) .
Storage Buffer	In 1x PBS, pH 7.4
Storage Instruction	Store at -20°C or lower. Aliquot to avoid repeated freezing and thawing.

Applications

- Western Blot (Tissue lysate)

PSMA7 monoclonal antibody (M01), clone 1A10-3G12. Western Blot analysis of PSMA7 expression in human omentum, serous carcinoma.

[Protocol Download](#)

- Western Blot (Cell lysate)

PSMA7 monoclonal antibody (M01), clone 1A10-3G12 Western Blot analysis of PSMA7 expression in HeLa (Cat # L013V1).

[Protocol Download](#)

- Western Blot (Transfected lysate)

Western Blot analysis of PSMA7 expression in transfected 293T cell line by PSMA7 monoclonal antibody (M01), clone 1A10-3G12.

Lane 1: PSMA7 transfected lysate (Predicted MW: 27.9 KDa).

Lane 2: Non-transfected lysate.

[Protocol Download](#)

- Western Blot (Recombinant protein)

[Protocol Download](#)

- Immunohistochemistry (Formalin/PFA-fixed paraffin-embedded sections)

Immunoperoxidase of monoclonal antibody to PSMA7 on formalin-fixed paraffin-embedded human colon tissue. [antibody concentration 5 ug/ml]

[Protocol Download](#)

- Immunohistochemistry (Formalin/PFA-fixed paraffin-embedded sections)

Immunoperoxidase of monoclonal antibody to PSMA7 on formalin-fixed paraffin-embedded human lung, adenosquamous cell carcinoma. [antibody concentration 5 ug/ml]

[Protocol Download](#)

- Immunoprecipitation

Immunoprecipitation of PSMA7 transfected lysate using anti-PSMA7 monoclonal antibody and Protein A Magnetic Bead, and immunoblotted with PSMA7 MaxPab rabbit polyclonal antibody.

[Protocol Download](#)

- Sandwich ELISA (Recombinant protein)

Detection limit for recombinant GST tagged PSMA7 is approximately 1ng/ml as a capture antibody.

[Protocol Download](#)

- ELISA

- Immunofluorescence

Immunofluorescence of monoclonal antibody to PSMA7 on HeLa cell. [antibody concentration 1 ~ 10 ug/ml]

Gene Info — PSMA7

Entrez GeneID

[5688](#)

GeneBank Accession#	BC004427
Protein Accession#	AAH04427
Gene Name	PSMA7
Gene Alias	C6, HSPC, MGC3755, RC6-1, XAPC7
Gene Description	proteasome (prosome, macropain) subunit, alpha type, 7
Omim ID	606607
Gene Ontology	Hyperlink
Gene Summary	<p>The proteasome is a multicatalytic proteinase complex with a highly ordered ring-shaped 20S core structure. The core structure is composed of 4 rings of 28 non-identical subunits; 2 rings are composed of 7 alpha subunits and 2 rings are composed of 7 beta subunits. Proteasomes are distributed throughout eukaryotic cells at a high concentration and cleave peptides in an ATP/ubiquitin-dependent process in a non-lysosomal pathway. An essential function of a modified proteasome, the immunoproteasome, is the processing of class I MHC peptides. This gene encodes a member of the peptidase T1A family, that is a 20S core alpha subunit. This particular subunit has been shown to interact specifically with the hepatitis B virus X protein, a protein critical to viral replication. In addition, this subunit is involved in regulating hepatitis virus C internal ribosome entry site (IRES) activity, an activity essential for viral replication. This core alpha subunit is also involved in regulating the hypoxia-inducible factor-1alpha, a transcription factor important for cellular responses to oxygen tension. Multiple isoforms of this subunit arising from alternative splicing may exist but alternative transcripts for only two isoforms have been defined. A pseudogene has been identified on chromosome 9. [provided by RefSeq]</p>
Other Designations	OTTHUMP00000031449 proteasome alpha 7 subunit proteasome subunit RC6-1 proteasome subunit XAPC7 proteasome subunit alpha 4

Publication Reference

- [PSMA7 inhibits the tumorigenicity of A549 human lung adenocarcinoma cells.](#)

Tan JY, Huang X, Luo YL.

Molecular and Cellular Biochemistry 2012 Jul; 366(1-2):131.

Application: WB-Ce, Human, A-549 cells

- [Proteomic identification of putative biomarkers of radiotherapy resistance: a possible role for the 26S proteasome?](#)

Smith L, Qutob O, Watson MB, Beavis AW, Potts D, Welham KJ, Garimella V, Lind MJ, Drew PJ, Cawkwell L.

Neoplasia 2009 Nov; 11(11):1194.

Application: WB-Ce, Human, MCF-7, MDA-MB-231, T-47D cells

Pathway

- [Proteasome](#)

Disease

- [Kidney Failure](#)