

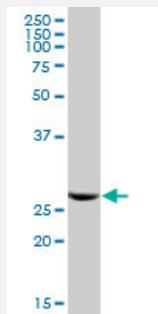
MaxPab®

PSMA7 MaxPab mouse polyclonal antibody (B01P)

Catalog # H00005688-B01P

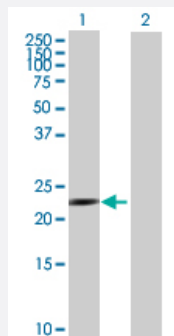
Size 50 ug

Applications



Western Blot (Tissue lysate)

PSMA7 MaxPab polyclonal antibody. Western Blot analysis of PSMA7 expression in human liver.



Western Blot (Transfected lysate)

Western Blot analysis of PSMA7 expression in transfected 293T cell line ([H00005688-T01](#)) by PSMA7 MaxPab polyclonal antibody.

Lane 1: PSMA7 transfected lysate(27.28 KDa).

Lane 2: Non-transfected lysate.

Specification

Product Description

Mouse polyclonal antibody raised against a full-length human PSMA7 protein.

Immunogen

PSMA7 (NP_002783.1, 1 a.a. ~ 248 a.a) full-length human protein.

Sequence

MSYDRAITVFSPDGHFLFQVEYAEAVKKGSTAVGVRGRDIVLGVEKKSVAKLQDERTVRKICAL
DDNVCMAFAGLTADARVINRAREVCQSHRLTVEDPVTVEYTRYASLKQRYTQSNRRPFGISALI
VGFDGFDGTPRLYQTDPSGTYHAWKANAIGRGAKSVREFLEKNYTDIAETDDLTIKLVKALLEVVQ
SGGKNIELAVMRRDQSLKILNPEEIEKYVAEIEKEKEENEKQKKAS

Host

Mouse

Reactivity

Human

Interspecies Antigen Sequence	Mouse (99); Rat (99)
Quality Control Testing	Antibody reactive against mammalian transfected lysate.
Storage Buffer	In 1x PBS, pH 7.4
Storage Instruction	Store at -20°C or lower. Aliquot to avoid repeated freezing and thawing.

Applications

- Western Blot (Tissue lysate)

PSMA7 MaxPab polyclonal antibody. Western Blot analysis of PSMA7 expression in human liver.

[Protocol Download](#)

- Western Blot (Transfected lysate)

Western Blot analysis of PSMA7 expression in transfected 293T cell line ([H00005688-T01](#)) by PSMA7 MaxPab polyclonal antibody.

Lane 1: PSMA7 transfected lysate(27.28 KDa).

Lane 2: Non-transfected lysate.

[Protocol Download](#)

Gene Info — PSMA7

Entrez GeneID	5688
GeneBank Accession#	NM_002792.2
Protein Accession#	NP_002783.1
Gene Name	PSMA7
Gene Alias	C6, HSPC, MGC3755, RC6-1, XAPC7
Gene Description	proteasome (prosome, macropain) subunit, alpha type, 7
Omim ID	606607
Gene Ontology	Hyperlink

Gene Summary

The proteasome is a multicatalytic proteinase complex with a highly ordered ring-shaped 20S core structure. The core structure is composed of 4 rings of 28 non-identical subunits; 2 rings are composed of 7 alpha subunits and 2 rings are composed of 7 beta subunits. Proteasomes are distributed throughout eukaryotic cells at a high concentration and cleave peptides in an ATP/ubiquitin-dependent process in a non-lysosomal pathway. An essential function of a modified proteasome, the immunoproteasome, is the processing of class I MHC peptides. This gene encodes a member of the peptidase T1A family, that is a 20S core alpha subunit. This particular subunit has been shown to interact specifically with the hepatitis B virus X protein, a protein critical to viral replication. In addition, this subunit is involved in regulating hepatitis virus C internal ribosome entry site (IRES) activity, an activity essential for viral replication. This core alpha subunit is also involved in regulating the hypoxia-inducible factor-1alpha, a transcription factor important for cellular responses to oxygen tension. Multiple isoforms of this subunit arising from alternative splicing may exist but alternative transcripts for only two isoforms have been defined. A pseudogene has been identified on chromosome 9. [provided by RefSeq]

Other Designations

OTTHUMP00000031449|proteasome alpha 7 subunit|proteasome subunit RC6-1|proteasome subunit XAPC7|proteasome subunit alpha 4

Pathway

- [Proteasome](#)

Disease

- [Kidney Failure](#)