

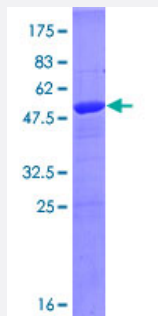
Full-Length

PSMA5 (Human) Recombinant Protein (P01)

Catalog # H00005686-P01

Size 25 ug, 10 ug

Applications



Specification

Product Description	Human PSMA5 full-length ORF (NP_002781.2, 1 a.a. - 241 a.a.) recombinant protein with GST-tag at N-terminal.
Sequence	MFLTRSEYDRGVNTFSPEGRLFQVEYAIEAIKLGSTAIGIQTSEGVCLAVEKRITSPLMEPSSIEKVEI DAHIGCAMSGLIADAKTLIDKARVETQNHWFYTYNETMTVESVTQAVSNLALQFGCEEDADPGAMSR PFGVALLFGGVDEKGPQLFHMDPSGTFVQCDARAIGSASEGAQSSLQEVYHKSMTLKEAIKSSLII LKQVMEEKLNATNIELATVQPGQNFHMFTEELEEVIKDI
Host	Wheat Germ (in vitro)
Theoretical MW (kDa)	52.8
Preparation Method	in vitro wheat germ expression system
Purification	Glutathione Sepharose 4 Fast Flow
Quality Control Testing	12.5% SDS-PAGE Stained with Coomassie Blue.
Storage Buffer	50 mM Tris-HCl, 10 mM reduced Glutathione, pH=8.0 in the elution buffer.
Storage Instruction	Store at -80°C. Aliquot to avoid repeated freezing and thawing.
Note	Best use within three months from the date of receipt of this protein.

Applications

- Enzyme-linked Immunoabsorbent Assay
- Western Blot (Recombinant protein)
- Antibody Production
- Protein Array

Gene Info — PSMA5

Entrez GeneID [5686](#)

GeneBank Accession# [NM_002790.2](#)

Protein Accession# [NP_002781.2](#)

Gene Name PSMA5

Gene Alias MGC117302, MGC125802, MGC125803, MGC125804, PSC5, ZETA

Gene Description proteasome (prosome, macropain) subunit, alpha type, 5

Omim ID [176844](#)

Gene Ontology [Hyperlink](#)

Gene Summary The proteasome is a multicatalytic proteinase complex with a highly ordered ring-shaped 20S core structure. The core structure is composed of 4 rings of 28 non-identical subunits; 2 rings are composed of 7 alpha subunits and 2 rings are composed of 7 beta subunits. Proteasomes are distributed throughout eukaryotic cells at a high concentration and cleave peptides in an ATP/ubiquitin-dependent process in a non-lysosomal pathway. An essential function of a modified proteasome, the immunoproteasome, is the processing of class I MHC peptides. This gene encodes a member of the peptidase T1A family, that is a 20S core alpha subunit. [provided by RefSeq]

Other Designations OTTHUMP00000013792|macropain subunit zeta|macropain zeta chain|multicatalytic endopeptidase complex zeta chain|proteasome alpha 5 subunit|proteasome component 5|proteasome subunit zeta|proteasome zeta chain

Pathway

- [Proteasome](#)