

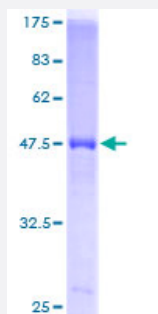
Full-Length

PSMA2 (Human) Recombinant Protein (P01)

Catalog # H00005683-P01

Size 25 ug, 10 ug

Applications



Specification

Product Description

Human PSMA2 full-length ORF (AAH47697, 1 a.a. - 234 a.a.) recombinant protein with GST-tag at N-terminal.

Sequence

MAERGYSFSLTTFSPSGKLVQIEYALAAVAGGAPSVGIKAANGVVLATEKKQKSILYDERSVHKVE
PITKHIGLVYSGMGPDYRVLVHRARKLAQQYYLVYQEPITPAQLVQRVASVMQEYTSQGGVRPFGV
SLICGWNEGRPYLFQSDPSGAYFAWKATAMGKNYVNGKTFLEKRYNEDLEDAIHTAILTKES
FEGQMTEDNIEVGICNEAGFRRLTPTEVKDYLAIA

Host

Wheat Germ (in vitro)

Theoretical MW (kDa)

51.48

Preparation Method

[in vitro wheat germ expression system](#)

Purification

Glutathione Sepharose 4 Fast Flow

Quality Control Testing

12.5% SDS-PAGE Stained with Coomassie Blue.

Storage Buffer

50 mM Tris-HCl, 10 mM reduced Glutathione, pH=8.0 in the elution buffer.

Storage Instruction

Store at -80°C. Aliquot to avoid repeated freezing and thawing.

Note

Best use within three months from the date of receipt of this protein.

Applications

- Enzyme-linked Immunoabsorbent Assay
- Western Blot (Recombinant protein)
- Antibody Production
- Protein Array

Gene Info — PSMA2

Entrez GeneID [5683](#)

GeneBank Accession# [BC047697](#)

Protein Accession# [AAH47697](#)

Gene Name PSMA2

Gene Alias HC3, MU, PMSA2, PSC2

Gene Description proteasome (prosome, macropain) subunit, alpha type, 2

Omim ID [176842](#)

Gene Ontology [Hyperlink](#)

Gene Summary The proteasome is a multicatalytic proteinase complex with a highly ordered ring-shaped 20S core structure. The core structure is composed of 4 rings of 28 non-identical subunits; 2 rings are composed of 7 alpha subunits and 2 rings are composed of 7 beta subunits. Proteasomes are distributed throughout eukaryotic cells at a high concentration and cleave peptides in an ATP/ubiquitin-dependent process in a non-lysosomal pathway. An essential function of a modified proteasome, the immunoproteasome, is the processing of class I MHC peptides. This gene encodes a member of the peptidase T1A family, that is a 20S core alpha subunit. [provided by RefSeq]

Other Designations macropain subunit C3|multicatalytic endopeptidase complex subunit C3|proteasome alpha 2 subunit|proteasome component C3|proteasome subunit HC3

Pathway

- [Proteasome](#)