

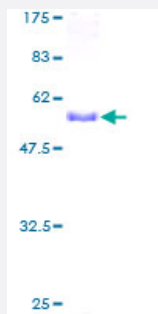
Full-Length

PSMA1 (Human) Recombinant Protein (P01)

Catalog # H00005682-P01

Size 25 ug, 10 ug

Applications



Specification

Product Description	Human PSMA1 full-length ORF (AAH02577, 1 a.a. - 263 a.a.) recombinant protein with GST-tag at N-terminal.
Sequence	MFRNQYDNDVTWSPQGRIHQIEYAMEAVKQGSATVGLKSKTHAVLVALKRAQSELAAHQKKILH VDNHIGISAGLTADARLLCNFMRQECLDSRFVDRPLPVSRVLSLIGSKTQIPTQRYGRRPYGVGL LIAGYDDMGPHIFQTCPSANYFDCRAMSIGARSQSARTYLERHMSEFMECNLNLVKHGLRALRE TLPAEQDLTTKNVSIGVKGDLFTYDDDDVSPFLEGLEERPQRKAQPAQPADEPAEKADPEME H
Host	Wheat Germ (in vitro)
Theoretical MW (kDa)	54.67
Preparation Method	in vitro wheat germ expression system
Purification	Glutathione Sepharose 4 Fast Flow
Quality Control Testing	12.5% SDS-PAGE Stained with Coomassie Blue.
Storage Buffer	50 mM Tris-HCl, 10 mM reduced Glutathione, pH=8.0 in the elution buffer.
Storage Instruction	Store at -80°C. Aliquot to avoid repeated freezing and thawing.
Note	Best use within three months from the date of receipt of this protein.

Applications

- Enzyme-linked Immunoabsorbent Assay
- Western Blot (Recombinant protein)
- Antibody Production
- Protein Array

Gene Info — PSMA1

Entrez GeneID	5682
GeneBank Accession#	BC002577
Protein Accession#	AAH02577
Gene Name	PSMA1
Gene Alias	HC2, MGC14542, MGC14575, MGC14751, MGC1667, MGC21459, MGC22853, MGC23915, NU, PROS30
Gene Description	proteasome (prosome, macropain) subunit, alpha type, 1
Omim ID	602854
Gene Ontology	Hyperlink
Gene Summary	The proteasome is a multicatalytic proteinase complex with a highly ordered ring-shaped 20S core structure. The core structure is composed of 4 rings of 28 non-identical subunits; 2 rings are composed of 7 alpha subunits and 2 rings are composed of 7 beta subunits. Proteasomes are distributed throughout eukaryotic cells at a high concentration and cleave peptides in an ATP/ubiquitin-dependent process in a non-lysosomal pathway. An essential function of a modified proteasome, the immunoproteasome, is the processing of class I MHC peptides. This gene encodes a member of the peptidase T1A family, that is a 20S core alpha subunit. Alternative splicing results in multiple transcript variants encoding distinct isoforms
Other Designations	30 kDa prosomal protein macropain subunit nu multicatalytic endopeptidase complex subunit C2 proteasome alpha 1 subunit proteasome component C2 proteasome nu chain proteasome subunit nu proteasome subunit, alpha-type, 1 protein P30-33K

Pathway

- [Proteasome](#)