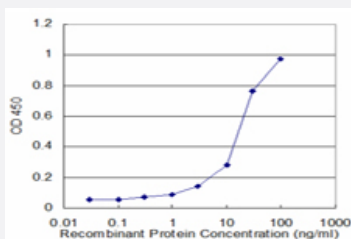


PSMA1 monoclonal antibody (M02), clone 3F12-2C9

Catalog # H00005682-M02

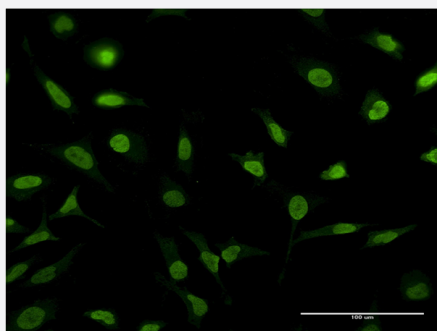
Size 100 ug

Applications



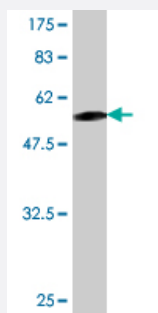
Sandwich ELISA (Recombinant protein)

Detection limit for recombinant GST tagged PSMA1 is approximately 3ng/ml as a capture antibody.



Immunofluorescence

Immunofluorescence of monoclonal antibody to PSMA1 on HeLa cell .
[antibody concentration 10 ug/ml]



Western Blot detection against Immunogen (54.67 KDa) .

Specification

Product Description

Mouse monoclonal antibody raised against a full-length recombinant PSMA1.

Immunogen	PSMA1 (AAH02577, 1 a.a. ~ 263 a.a) full-length recombinant protein with GST tag. MW of the GST tag alone is 26 KDa.
Sequence	MFRNQYDNDVTWSPQGRIHQIEYAMEAVKQGSATVGLKSKTHAVLVALKRAQSELAAHQKKILHVDNHIGISIAGLTADARLLCNFMRQECLDSRFVDRPLPVSRLVSLIGSKTQIPTQRYGRRPYGVGLLIAGYDDMGPHIFQTCPSANYFDCRAMSIGARSQSARTYLERHMSEFMECNLNELVKHGLRALRETLPAEQDLTTKNVSIGVGKDLEFTYDDDDVSPFLEGLEERPQRKAQPAQPADEPAEKADPEPMH
Host	Mouse
Reactivity	Human
Isotype	IgG1 Kappa
Quality Control Testing	Antibody Reactive Against Recombinant Protein. Western Blot detection against Immunogen (54.67 KDa) .
Storage Buffer	In 1x PBS, pH 7.4
Storage Instruction	Store at -20°C or lower. Aliquot to avoid repeated freezing and thawing.

Applications

- Western Blot (Recombinant protein)

[Protocol Download](#)

- Sandwich ELISA (Recombinant protein)

Detection limit for recombinant GST tagged PSMA1 is approximately 3ng/ml as a capture antibody.

[Protocol Download](#)

- ELISA

- Immunofluorescence

Immunofluorescence of monoclonal antibody to PSMA1 on HeLa cell . [antibody concentration 10 ug/ml]

Gene Info — PSMA1

Entrez GeneID [5682](#)

GeneBank Accession# [BC002577](#)

Protein Accession#	AAH02577
Gene Name	PSMA1
Gene Alias	HC2, MGC14542, MGC14575, MGC14751, MGC1667, MGC21459, MGC22853, MGC23915, NU, PROS30
Gene Description	proteasome (prosome, macropain) subunit, alpha type, 1
Omim ID	602854
Gene Ontology	Hyperlink
Gene Summary	<p>The proteasome is a multicatalytic proteinase complex with a highly ordered ring-shaped 20S core structure. The core structure is composed of 4 rings of 28 non-identical subunits; 2 rings are composed of 7 alpha subunits and 2 rings are composed of 7 beta subunits. Proteasomes are distributed throughout eukaryotic cells at a high concentration and cleave peptides in an ATP/ubiquitin-dependent process in a non-lysosomal pathway. An essential function of a modified proteasome, the immunoproteasome, is the processing of class I MHC peptides. This gene encodes a member of the peptidase T1A family, that is a 20S core alpha subunit. Alternative splicing results in multiple transcript variants encoding distinct isoforms</p>
Other Designations	30 kDa prosomal protein macropain subunit nu multicatalytic endopeptidase complex subunit C2 proteasome alpha 1 subunit proteasome component C2 proteasome nu chain proteasome subunit nu proteasome subunit, alpha-type, 1 protein P30-33K

Pathway

- [Proteasome](#)