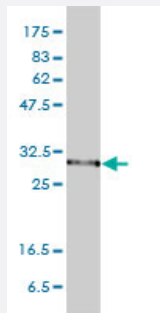


PSMA1 monoclonal antibody (M01), clone 1D9-1C7

Catalog # H00005682-M01

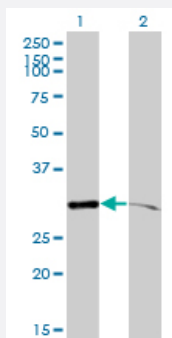
Size 100 ug

Applications



Western Blot (Cell lysate)

PSMA1 monoclonal antibody (M01), clone 1D9-1C7 Western Blot analysis of PSMA1 expression in HeLa (Cat # L013V1).

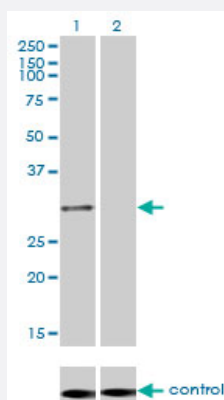


Western Blot (Transfected lysate)

Western Blot analysis of PSMA1 expression in transfected 293T cell line by PSMA1 monoclonal antibody (M01), clone 1D9-1C7.

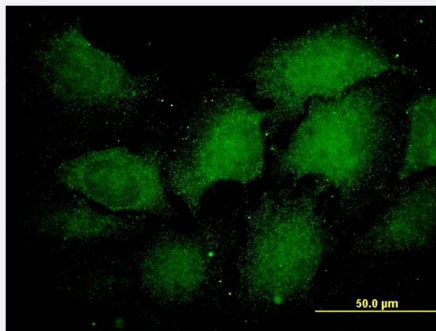
Lane 1: PSMA1 transfected lysate(30.2 KDa).

Lane 2: Non-transfected lysate.



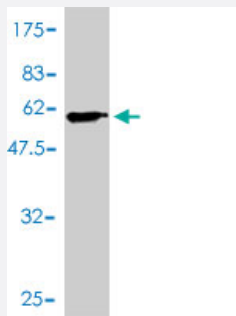
RNAi Knockdown (Antibody validated)

Western blot analysis of PSMA1 over-expressed 293 cell line, cotransfected with PSMA1 Validated Chimera RNAi (Cat # H00005682-R01V) (Lane 2) or non-transfected control (Lane 1). Blot probed with PSMA1 monoclonal antibody (M01), clone 1D9-1C7 (Cat # H00005682-M01). GAPDH (36.1 kDa) used as specificity and loading control.



Immunofluorescence

Immunofluorescence of monoclonal antibody to PSMA1 on HeLa cell. [antibody concentration 60 ug/ml]



Western Blot detection against Immunogen (54.67 KDa) .

Specification

Product Description	Mouse monoclonal antibody raised against a full length recombinant PSMA1.
Immunogen	PSMA1 (AAH02577, 1 a.a. ~ 263 a.a) full-length recombinant protein with GST tag. MW of the GST tag alone is 26 KDa.
Sequence	MFRNQYDNDVTWSPQGRIHQIEYAMEAVKQGSATVGLKSKTHAVLVALKRAQSELAAHQKKILHVDNHIGISIAGLTADARLLCNFMRQECLDSRFVDRPLPVSRLVSLIGSKTQIPTQRYGRRPYGVGLLIAGYDDMGPHIFQTCPSANYFDCRAMSIGARSQSARTYLERHMSEFMECNLNELVKHGLRALRETLPAEQDLTTKNVSIGVGKDLEFTYDDDDVSPFLEGLEERPQRKAQPAQPADEPAEKADPEPMEH
Host	Mouse
Reactivity	Human
Isotype	IgG1 kappa
Quality Control Testing	Antibody Reactive Against Recombinant Protein. Western Blot detection against Immunogen (54.67 KDa) .
Storage Buffer	In 1x PBS, pH 7.4
Storage Instruction	Store at -20°C or lower. Aliquot to avoid repeated freezing and thawing.

Applications

- Western Blot (Cell lysate)

PSMA1 monoclonal antibody (M01), clone 1D9-1C7 Western Blot analysis of PSMA1 expression in HeLa (Cat # L013V1).

[Protocol Download](#)

- Western Blot (Transfected lysate)

Western Blot analysis of PSMA1 expression in transfected 293T cell line by PSMA1 monoclonal antibody (M01), clone 1D9-1C7.

Lane 1: PSMA1 transfected lysate(30.2 KDa).

Lane 2: Non-transfected lysate.

[Protocol Download](#)

- Western Blot (Recombinant protein)

[Protocol Download](#)

- ELISA

- RNAi Knockdown (Antibody validated)

Western blot analysis of PSMA1 over-expressed 293 cell line, cotransfected with PSMA1 Validated Chimera RNAi (Cat # H00005682-R01V) (Lane 2) or non-transfected control (Lane 1). Blot probed with PSMA1 monoclonal antibody (M01), clone 1D9-1C7 (Cat # H00005682-M01). GAPDH (36.1 kDa) used as specificity and loading control.

[Protocol Download](#)

- Immunofluorescence

Immunofluorescence of monoclonal antibody to PSMA1 on HeLa cell. [antibody concentration 60 ug/ml]

Gene Info — PSMA1

Entrez GeneID	5682
GeneBank Accession#	BC002577
Protein Accession#	AAH02577
Gene Name	PSMA1

Gene Alias	HC2, MGC14542, MGC14575, MGC14751, MGC1667, MGC21459, MGC22853, MGC23915, NU, PROS30
Gene Description	proteasome (prosome, macropain) subunit, alpha type, 1
Omim ID	602854
Gene Ontology	Hyperlink
Gene Summary	The proteasome is a multicatalytic proteinase complex with a highly ordered ring-shaped 20S core structure. The core structure is composed of 4 rings of 28 non-identical subunits; 2 rings are composed of 7 alpha subunits and 2 rings are composed of 7 beta subunits. Proteasomes are distributed throughout eukaryotic cells at a high concentration and cleave peptides in an ATP/ubiquitin-dependent process in a non-lysosomal pathway. An essential function of a modified proteasome, the immunoproteasome, is the processing of class I MHC peptides. This gene encodes a member of the peptidase T1A family, that is a 20S core alpha subunit. Alternative splicing results in multiple transcript variants encoding distinct isoforms
Other Designations	30 kDa prosomal protein macropain subunit nu multicatalytic endopeptidase complex subunit C2 proteasome alpha 1 subunit proteasome component C2 proteasome nu chain proteasome subunit nu proteasome subunit, alpha-type, 1 protein P30-33K

Publication Reference

- [The Role of Translationally Controlled Tumor Protein in Tumor Growth and Metastasis of Colon Adenocarcinoma Cells.](#)

Ma Q, Geng Y, Xu W, Wu Y, He F, Shu W, Huang M, Du H, Li M.

Journal of Proteome Research 2010 Jan; 9(1):40.

Application: WB-Tr, Human, LoVo, SW620 cells

Pathway

- [Proteasome](#)