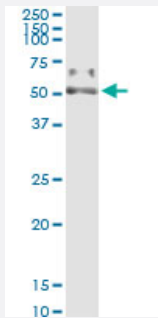


PSAP (Human) IP-WB Antibody Pair

Catalog # H00005660-PW2

Size 1 Set

Applications



Immunoprecipitation of PSAP transfected lysate using rabbit polyclonal anti-PSAP and Protein A Magnetic Bead ([U0007](#)), and immunoblotted with mouse purified polyclonal anti-PSAP.

Specification

Product Description	This IP-WB antibody pair set comes with one antibody for immunoprecipitation and another to detect the precipitated protein in western blot.
Reactivity	Human
Quality Control Testing	Immunoprecipitation-Western Blot (IP-WB) Immunoprecipitation of PSAP transfected lysate using rabbit polyclonal anti-PSAP and Protein A Magnetic Bead (U0007), and immunoblotted with mouse purified polyclonal anti-PSAP.
Supplied Product	Antibody pair set content: 1. Antibody pair for IP: rabbit polyclonal anti-PSAP (300 ul) 2. Antibody pair for WB: mouse purified polyclonal anti-PSAP (50 ug)
Storage Instruction	Store reagents of the antibody pair set at -20°C or lower. Please aliquot to avoid repeated freeze thaw cycle. Reagents should be returned to -20°C storage immediately after use.

Applications

- Immunoprecipitation-Western Blot

[Protocol Download](#)

Gene Info — PSAP

Entrez GeneID [5660](#)

Gene Name PSAP

Gene Alias FLJ00245, GLBA, MGC110993, SAP1

Gene Description prosaposin

Omim ID [176801](#) [249900](#) [610539](#)

Gene Ontology [Hyperlink](#)

Gene Summary

This gene encodes a highly conserved glycoprotein which is a precursor for 4 cleavage products: saposins A, B, C, and D. Each domain of the precursor protein is approximately 80 amino acid residues long with nearly identical placement of cysteine residues and glycosylation sites. Saposins A-D localize primarily to the lysosomal compartment where they facilitate the catabolism of glycosphingolipids with short oligosaccharide groups. The precursor protein exists both as a secretory protein and as an integral membrane protein and has neurotrophic activities. Mutations in this gene have been associated with Gaucher disease, Tay-Sachs disease, and metachromatic leukodystrophy. Alternative splicing results in multiple transcript variants encoding different isoforms. [provided by RefSeq]

Other Designations OTTHUMP00000019776|sphingolipid activator protein-1

Pathway

- [Lysosome](#)

Disease

- [Alzheimer Disease](#)
- [Genetic Predisposition to Disease](#)
- [Prostate cancer](#)
- [Prostatic Hyperplasia](#)
- [Prostatic Neoplasms](#)
- [Schizophrenia](#)
- [Tobacco Use Disorder](#)