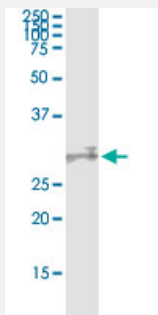


KLK10 (Human) IP-WB Antibody Pair

Catalog # H00005655-PW2

Size 1 Set

Applications



Immunoprecipitation of KLK10 transfected lysate using rabbit polyclonal anti-KLK10 and Protein A Magnetic Bead ([U0007](#)), and immunoblotted with mouse purified polyclonal anti-KLK10.

Specification

Product Description	This IP-WB antibody pair set comes with one antibody for immunoprecipitation and another to detect the precipitated protein in western blot.
Reactivity	Human
Quality Control Testing	Immunoprecipitation-Western Blot (IP-WB) Immunoprecipitation of KLK10 transfected lysate using rabbit polyclonal anti-KLK10 and Protein A Magnetic Bead (U0007), and immunoblotted with mouse purified polyclonal anti-KLK10.
Supplied Product	Antibody pair set content: 1. Antibody pair for IP: rabbit polyclonal anti-KLK10 (300 ul) 2. Antibody pair for WB: mouse purified polyclonal anti-KLK10 (50 ug)
Storage Instruction	Store reagents of the antibody pair set at -20°C or lower. Please aliquot to avoid repeated freeze thaw cycle. Reagents should be returned to -20°C storage immediately after use.

Applications

- Immunoprecipitation-Western Blot

[Protocol Download](#)

Gene Info — KLK10

Entrez GeneID	5655
Gene Name	KLK10
Gene Alias	NES1, PRSSL1
Gene Description	kallikrein-related peptidase 10
Omim ID	602673
Gene Ontology	Hyperlink
Gene Summary	Kallikreins are a subgroup of serine proteases having diverse physiological functions. Growing evidence suggests that many kallikreins are implicated in carcinogenesis and some have potential as novel cancer and other disease biomarkers. This gene is one of the fifteen kallikrein subfamily members located in a cluster on chromosome 19. Its encoded protein is secreted and may play a role in suppression of tumorigenesis in breast and prostate cancers. Alternate splicing of this gene results in multiple transcript variants encoding the same protein. [provided by RefSeq]
Other Designations	breast normal epithelial cell associated serine protease kallikrein 10 normal epithelial cell-specific 1 protease, serine-like, 1

Disease

- [Adenocarcinoma](#)
- [Breast cancer](#)
- [Breast Neoplasms](#)
- [Cystadenocarcinoma](#)
- [Endometrial Neoplasms](#)
- [Genetic Predisposition to Disease](#)
- [Neoplasms](#)
- [Ovarian cancer](#)
- [Ovarian Neoplasms](#)
- [Prostate cancer](#)
- [Prostatic Neoplasms](#)
- [Testicular Neoplasms](#)