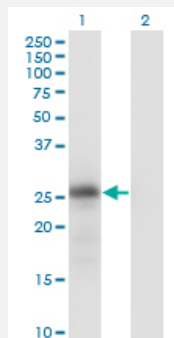


KLK6 monoclonal antibody (M01), clone 4A10

Catalog # H00005653-M01

Size 100 ug

Applications

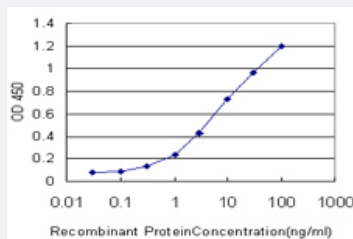


Western Blot (Transfected lysate)

Western Blot analysis of KLK6 expression in transfected 293T cell line by KLK6 monoclonal antibody (M01), clone 4A10.

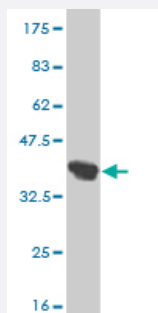
Lane 1: KLK6 transfected lysate(26.9 KDa).

Lane 2: Non-transfected lysate.



Sandwich ELISA (Recombinant protein)

Detection limit for recombinant GST tagged KLK6 is approximately 0.3ng/ml as a capture antibody.



Western Blot detection against Immunogen (36.63 KDa) .

Specification

Product Description

Mouse monoclonal antibody raised against a partial recombinant KLK6.

Immunogen	KLK6 (AAH15525, 91 a.a. ~ 190 a.a) partial recombinant protein with GST tag. MW of the GST tag alone is 26 KDa.
Sequence	RAVIHPDYDAASHDQDIMLLRLARPAKLSELIQPLPLERDCSANTTSCHILGWGKTADGDFPDTIQ CAYIHLVSREECEHAYPGQITQNMMLCAGDEKYGK
Host	Mouse
Reactivity	Human
Interspecies Antigen Sequence	Mouse (61); Rat (60)
Isotype	IgG2a Kappa
Quality Control Testing	Antibody Reactive Against Recombinant Protein. Western Blot detection against Immunogen (36.63 KDa) .
Storage Buffer	In 1x PBS, pH 7.4
Storage Instruction	Store at -20°C or lower. Aliquot to avoid repeated freezing and thawing.

Applications

- Western Blot (Transfected lysate)

Western Blot analysis of KLK6 expression in transfected 293T cell line by KLK6 monoclonal antibody (M01), clone 4A10.

Lane 1: KLK6 transfected lysate(26.9 KDa).

Lane 2: Non-transfected lysate.

[Protocol Download](#)

- Western Blot (Recombinant protein)

[Protocol Download](#)

- Sandwich ELISA (Recombinant protein)

Detection limit for recombinant GST tagged KLK6 is approximately 0.3ng/ml as a capture antibody.

[Protocol Download](#)

- ELISA

Gene Info — KLK6

Entrez GeneID	5653
GeneBank Accession#	BC015525
Protein Accession#	AAH15525
Gene Name	KLK6
Gene Alias	Bssp, Klk7, MGC9355, NEUROSIN, PRSS18, PRSS9, SP59, ZYME, hK6
Gene Description	kallikrein-related peptidase 6
Omim ID	602652
Gene Ontology	Hyperlink
Gene Summary	Kallikreins are a subgroup of serine proteases having diverse physiological functions. Growing evidence suggests that many kallikreins are implicated in carcinogenesis and some have potential as novel cancer and other disease biomarkers. This gene is one of the fifteen kallikrein subfamily members located in a cluster on chromosome 19. The encoded enzyme is regulated by steroid hormones. In tissue culture, the enzyme has been found to generate amyloidogenic fragments from the amyloid precursor protein, suggesting a potential for involvement in Alzheimer's disease. Multiple alternatively spliced transcript variants that encode different isoforms have been identified for this gene. [provided by RefSeq]
Other Designations	kallikrein 6 (neurosin, zyme) protease M protease, serine, 18 protease, serine, 9

Publication Reference

- [Correlation between KLK6 expression and the clinicopathological features of glioma.](#)

Lou J, Si H, Chen Y, Sun X, Zhang H, Niu A, Hu C.

Contemporary Oncology (Poznań, Poland) 2014 Aug; 18(4):246.

Application: IHC, Human, U251 cells

Disease

- [Birth Weight](#)
- [Genetic Predisposition to Disease](#)
- [Glioblastoma](#)

- [Glioma](#)
- [Leukemia](#)
- [Meningeal Neoplasms](#)
- [Meningioma](#)
- [Prostatic Neoplasms](#)