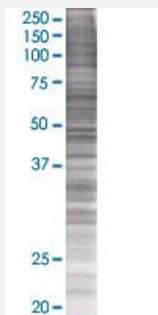


PRSS8 293T Cell Transient Overexpression Lysate(Denatured)

Catalog # H00005652-T01

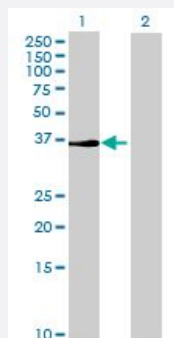
Size 100 uL

Applications



SDS-PAGE Gel

PRSS8 transfected lysate.



Western Blot

Lane 1: PRSS8 transfected lysate (37.84 KDa)

Lane 2: Non-transfected lysate.

Specification

Transfected Cell Line 293T

Plasmid pCMV-PRSS8 full-length

Host Human

Theoretical MW (kDa) 37.84

Quality Control Testing Transient overexpression cell lysate was tested with Anti-PRSS8 antibody ([H00005652-B01](#)) by Western Blots.

SDS-PAGE Gel
PRSS8 transfected lysate.

Western Blot
Lane 1: PRSS8 transfected lysate (37.84 KDa)
Lane 2: Non-transfected lysate.

Storage Buffer

1X Sample Buffer (50 mM Tris-HCl, 2% SDS, 10% glycerol, 300 mM 2-mercaptoethanol, 0.01% Bromophenol blue)

Storage Instruction

Store at -80°C. Aliquot to avoid repeated freezing and thawing.

Applications

- Western Blot

Gene Info — PRSS8

Entrez GeneID[5652](#)**GeneBank Accession#**[NM_002773.2](#)**Protein Accession#**[NP_002764.1](#)**Gene Name**

PRSS8

Gene Alias

CAP1, PROSTASIN

Gene Description

protease, serine, 8

Omim ID[600823](#)**Gene Ontology**[Hyperlink](#)**Gene Summary**

This gene encodes a trypsinogen, which is a member of the trypsin family of serine proteases. This enzyme is highly expressed in prostate epithelia and is one of several proteolytic enzymes found in seminal fluid. The proprotein is cleaved to produce a light chain and a heavy chain which are associated by a disulfide bond. It is active on peptide linkages involving the carboxyl group of lysine or arginine. [provided by RefSeq]

Other Designations

channel-activating protease 1|prostasin

Disease

- [Hypertension](#)