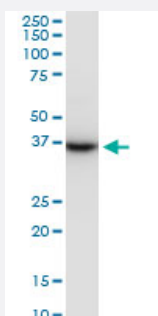


PRSS8 monoclonal antibody (M11A), clone 3C4

Catalog # H00005652-M11A

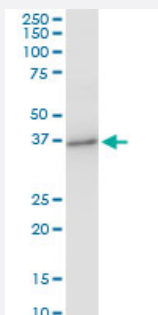
Size 200 uL

Applications



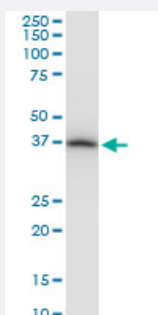
Western Blot (Cell lysate)

PRSS8 monoclonal antibody (M11A), clone 3C4. Western Blot analysis of PRSS8 expression in Raw 264.7.



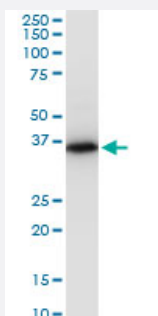
Western Blot (Cell lysate)

PRSS8 monoclonal antibody (M11A), clone 3C4. Western Blot analysis of PRSS8 expression in NIH/3T3.



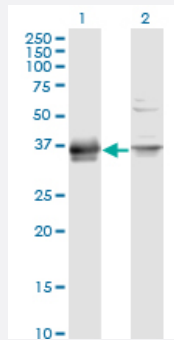
Western Blot (Cell lysate)

PRSS8 monoclonal antibody (M11A), clone 3C4. Western Blot analysis of PRSS8 expression in PC-12.



Western Blot (Cell lysate)

PRSS8 monoclonal antibody (M11A), clone 3C4. Western Blot analysis of PRSS8 expression in HepG2.

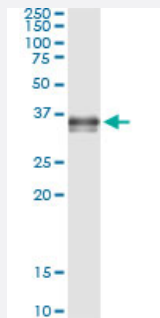


Western Blot (Transfected lysate)

Western Blot analysis of PRSS8 expression in transfected 293T cell line by PRSS8 monoclonal antibody (M11A), clone 3C4.

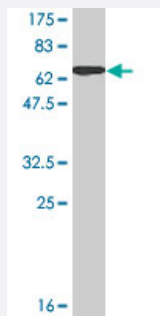
Lane 1: PRSS8 transfected lysate (Predicted MW: 36.4 kDa).

Lane 2: Non-transfected lysate.



Immunoprecipitation

Immunoprecipitation of PRSS8 transfected lysate using anti-PRSS8 monoclonal antibody and Protein A Magnetic Bead, and immunoblotted with PRSS8 MaxPab rabbit polyclonal antibody.



Western Blot detection against Immunogen (63.47 kDa) .

Specification

Product Description

Mouse monoclonal antibody raised against a full-length recombinant PRSS8.

Immunogen

PRSS8 (AAH01462, 1 a.a. ~ 343 a.a) full-length recombinant protein with GST tag. MW of the GST tag alone is 26 kDa.

Sequence

MAQKGVLPGPQLGAVAILLYLGLLRSGTGAEGAEAPCGVAPQARITGGSSAVAGQWPWQVSITY
EGVHVCGLSLVSEQWVLSAAHCFPSEHHKEAYEVKLGALQLDSYEDAKVSTLKDIIHPHSYLQ
EGSQGDIALQLSRPITFSRYRPICLPAANASFPNGLHCTVTGWGHVAPSVSLLTPKPLQQLEVPLI
SRETCNCLYNIDAKPEEPHFVQEDMVCAGYVEGGKDACQGDGGPLSCPVEGLWYLTGIVSWG
DACGARNRPGVYTLASSYASWISQSVTELQPRVVPQTQESQPDSNLCGSHLAFSSAPAQGLLRP
ILFLPLGLALGLLSPWLSEH

Host

Mouse

Reactivity

Human, Mouse, Rat

Isotype	IgM Kappa
Quality Control Testing	Antibody Reactive Against Recombinant Protein. Western Blot detection against Immunogen (63.47 KDa) .
Storage Buffer	In ascites fluid
Storage Instruction	Store at -20°C or lower. Aliquot to avoid repeated freezing and thawing.

Applications

- Western Blot (Cell lysate)

PRSS8 monoclonal antibody (M11A), clone 3C4. Western Blot analysis of PRSS8 expression in Raw 264.7.

[Protocol Download](#)

- Western Blot (Cell lysate)

PRSS8 monoclonal antibody (M11A), clone 3C4. Western Blot analysis of PRSS8 expression in NIH/3T3.

[Protocol Download](#)

- Western Blot (Cell lysate)

PRSS8 monoclonal antibody (M11A), clone 3C4. Western Blot analysis of PRSS8 expression in PC-12.

[Protocol Download](#)

- Western Blot (Cell lysate)

PRSS8 monoclonal antibody (M11A), clone 3C4. Western Blot analysis of PRSS8 expression in HepG2.

[Protocol Download](#)

- Western Blot (Transfected lysate)

Western Blot analysis of PRSS8 expression in transfected 293T cell line by PRSS8 monoclonal antibody (M11A), clone 3C4.

Lane 1: PRSS8 transfected lysate (Predicted MW: 36.4 KDa).

Lane 2: Non-transfected lysate.

[Protocol Download](#)

- Western Blot (Recombinant protein)

[Protocol Download](#)

- Immunoprecipitation

Immunoprecipitation of PRSS8 transfected lysate using anti-PRSS8 monoclonal antibody and Protein A Magnetic Bead, and immunoblotted with PRSS8 MaxPab rabbit polyclonal antibody.

[Protocol Download](#)

- ELISA

Gene Info — PRSS8

Entrez GeneID [5652](#)

GeneBank Accession# [BC001462](#)

Protein Accession# [AAH01462](#)

Gene Name PRSS8

Gene Alias CAP1, PROSTASIN

Gene Description protease, serine, 8

Omim ID [600823](#)

Gene Ontology [Hyperlink](#)

Gene Summary This gene encodes a trypsinogen, which is a member of the trypsin family of serine proteases. This enzyme is highly expressed in prostate epithelia and is one of several proteolytic enzymes found in seminal fluid. The proprotein is cleaved to produce a light chain and a heavy chain which are associated by a disulfide bond. It is active on peptide linkages involving the carboxyl group of lysine or arginine. [provided by RefSeq]

Other Designations channel-activating protease 1|prostasin

Publication Reference

- [Prostate cancer-associated urinary proteomes differ before and after prostatectomy.](#)

Yan Feng, Shengzhi Liu, Rongrong Zha, Xun Sun, Kexin Li, Di Wu, Uma K Aryal, Michael Koch, Bai-Yan Li, Hiroki Yokota.
Therapeutic Advances in Medical Oncology 2022 Oct; 14:1758835922.

Application: WB-Ce, Human, Mouse, Human urine, TRAMP cells

Disease

- [Hypertension](#)