

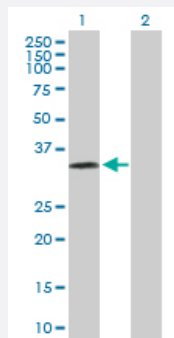
MaxPab®

PRSS8 purified MaxPab rabbit polyclonal antibody (D01P)

Catalog # H00005652-D01P

Size 100 ug

Applications



Western Blot (Transfected lysate)

Western Blot analysis of PRSS8 expression in transfected 293T cell line ([H00005652-T01](#)) by PRSS8 MaxPab polyclonal antibody.

Lane 1: PRSS8 transfected lysate(36.40 KDa).

Lane 2: Non-transfected lysate.

Specification

Product Description

Rabbit polyclonal antibody raised against a full-length human PRSS8 protein.

Immunogen

PRSS8 (NP_002764.1, 1 a.a. ~ 343 a.a) full-length human protein.

Sequence

MAQKGVLGPGQLGAVAILLYLGLLRSGTGAEGAEAPCGVAPQARITGGSSAVAGQWPWQVSITY
EGVHVCGGSLVSEQWVLSAAHCFPSEHHKEAYEVKLGALHQLDSYSEDQVSTLKDIIIPHSYLQ
EGSQGDIALQLSRPITFSRYRPICLPAANASFPNGLHCTVTGWGHVAPSVSLLTPKPLQQLEVPLI
SRETCNCLYNIDAKPEEPHFVQEDMVCAGYVEGGKDACQGDSSGGLSCPVEGLWYLTGIVSWG
DACGARNRPGVYTLASSYASWISQSVTELQPRVVPQTQESQPDNLGSHLAFSSAPAQGLLRP
ILFLPLGLALGLLSPWLSEH

Host

Rabbit

Reactivity

Human

Quality Control Testing

Antibody reactive against mammalian transfected lysate.

Storage Buffer

In 1x PBS, pH 7.4

Storage Instruction

Store at -20°C or lower. Aliquot to avoid repeated freezing and thawing.

Applications

- Western Blot (Transfected lysate)

Western Blot analysis of PRSS8 expression in transfected 293T cell line ([H00005652-T01](#)) by PRSS8 MaxPab polyclonal antibody.

Lane 1: PRSS8 transfected lysate(36.40 KDa).

Lane 2: Non-transfected lysate.

[Protocol Download](#)

Gene Info — PRSS8

Entrez GeneID [5652](#)

GeneBank Accession# [NM_002773.2](#)

Protein Accession# [NP_002764.1](#)

Gene Name PRSS8

Gene Alias CAP1, PROSTASIN

Gene Description protease, serine, 8

Omim ID [600823](#)

Gene Ontology [Hyperlink](#)

Gene Summary This gene encodes a trypsinogen, which is a member of the trypsin family of serine proteases. This enzyme is highly expressed in prostate epithelia and is one of several proteolytic enzymes found in seminal fluid. The proprotein is cleaved to produce a light chain and a heavy chain which are associated by a disulfide bond. It is active on peptide linkages involving the carboxyl group of lysine or arginine. [provided by RefSeq]

Other Designations channel-activating protease 1|prostasin

Disease

- [Hypertension](#)