

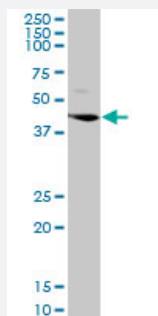
MaxPab®

LGMN purified MaxPab rabbit polyclonal antibody (D01P)

Catalog # H00005641-D01P

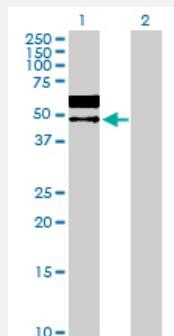
Size 100 ug

Applications



Western Blot (Cell lysate)

LGMN MaxPab rabbit polyclonal antibody. Western Blot analysis of LGMN expression in HeLa.



Western Blot (Transfected lysate)

Western Blot analysis of LGMN expression in transfected 293T cell line ([H00005641-T01](#)) by LGMN MaxPab polyclonal antibody.

Lane 1: LGMN transfected lysate(49.40 KDa).

Lane 2: Non-transfected lysate.

Specification

Product Description

Rabbit polyclonal antibody raised against a full-length human LGMN protein.

Immunogen

LGMN (NP_001008530.1, 1 a.a. ~ 433 a.a) full-length human protein.

Sequence

MVWKVAVFLSVALGIGAVPIDDPEDGGKHWVIVAGSNGWYNYRHQADACHAYQIIHRNGIPDEQI
VVMYDDIAYSEDNPTPGVINRPNGTDVYQGVPKDYTGEDVTPQNFLAVLRGDAEAVKGIGSGK
VLKSGPQDHVFYFTDHGSTGILVFPNEDLHVKDLNETIHYMYKHKMYRKMVFYIEACESGSMNH
LPDNINVYATTAANPRESSYACYDEKRSTYLGDWYSVNW MEDSDVEDLTKETLHKQYHLVKSHT
NTSHVMQYGNKTISTMKVMQFQGMKRKASSPVLPVTHLDLTSPDPVPLTIMKRKLMNTNDLEE
SRQLTEEIQRHLDARHLIEKSVRKIVSLAASEAEVEQLLSERAPLTGHSCYPEALLHFRTHCFNW
HSPTYEYALRHLVVLNLCCKPYPLHRIKLSMDHVC LGHY

Host	Rabbit
Reactivity	Human
Quality Control Testing	Antibody reactive against mammalian transfected lysate.
Storage Buffer	In 1x PBS, pH 7.4
Storage Instruction	Store at -20°C or lower. Aliquot to avoid repeated freezing and thawing.

Applications

- Western Blot (Cell lysate)

LGMN MaxPab rabbit polyclonal antibody. Western Blot analysis of LGMN expression in HeLa.

[Protocol Download](#)

- Western Blot (Transfected lysate)

Western Blot analysis of LGMN expression in transfected 293T cell line ([H00005641-T01](#)) by LGMN MaxPab polyclonal antibody.

Lane 1: LGMN transfected lysate(49.40 KDa).

Lane 2: Non-transfected lysate.

[Protocol Download](#)

Gene Info — LGMN

Entrez GeneID	5641
GeneBank Accession#	NM_001008530.1
Protein Accession#	NP_001008530.1
Gene Name	LGMN
Gene Alias	AEP, LGMN1, PRSC1
Gene Description	legumain
Omim ID	602620
Gene Ontology	Hyperlink

Gene Summary

This gene encodes a cysteine protease that has a strict specificity for hydrolysis of asparaginyl bonds. This enzyme may be involved in the processing of bacterial peptides and endogenous proteins for MHC class II presentation in the lysosomal/endosomal systems. Enzyme activation is triggered by acidic pH and appears to be autocatalytic. Protein expression occurs after monocytes differentiate into dendritic cells. A fully mature, active enzyme is produced following lipopolysaccharide expression in mature dendritic cells. Overexpression of this gene may be associated with the majority of solid tumor types. This gene has a pseudogene on chromosome 13. Several alternatively spliced transcript variants have been described, but the biological validity of only two has been determined. These two variants encode the same isoform. [provided by RefSeq]

Other Designations

asparaginyl endopeptidase|cysteine protease 1|protease, cysteine, 1 (legumain)

Publication Reference

- [Cleavage of Toll-like receptor 3 by cathepsins B and H is essential for signaling.](#)

Garcia-Cattaneo A, Gobert FX, Müller M, Toscano F, Flores M, Lescure A, Del Nery E, Benaroch P.

PNAS 2012 Jun; 109(23):9053.

Application: WB-Tr, Human, RPE1 cells

Pathway

- [Antigen processing and presentation](#)
- [Lysosome](#)