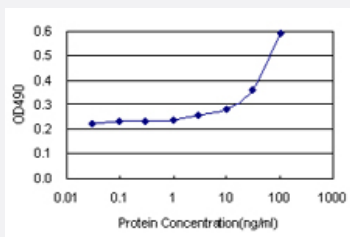


LGMN (Human) Matched Antibody Pair

Catalog # H00005641-AP11 Size 1 Set

Applications



Sandwich ELISA detection sensitivity ranging from 10 ng/ml to 100 ng/ml.

Specification

Product Description	This antibody pair set comes with a matched antibody pair to detect and quantify the protein level of human LGMN.
Reactivity	Human
Quality Control Testing	Standard curve using recombinant protein (H00005641-P01) as an analyte. Sandwich ELISA detection sensitivity ranging from 10 ng/ml to 100 ng/ml.
Supplied Product	Antibody pair set content: 1. Capture antibody: rabbit MaxPab® affinity purified polyclonal anti-LGMN (100 ug) 2. Detection antibody: mouse monoclonal anti-LGMN, IgG1 Kappa (20 ug) *Reagents are sufficient for at least 1-2 x 96 well plates using recommended protocols.
Storage Instruction	Store reagents of the antibody pair set at -20°C or lower. Please aliquot to avoid repeated freeze thaw cycle. Reagents should be returned to -20°C storage immediately after use.

Applications

- ELISA Pair (Recombinant protein)

[Protocol Download](#)

Gene Info — LGMN

Entrez GeneID [5641](#)

Gene Name LGMN

Gene Alias AEP, LGMN1, PRSC1

Gene Description legumain

Omim ID [602620](#)

Gene Ontology [Hyperlink](#)

Gene Summary

This gene encodes a cysteine protease that has a strict specificity for hydrolysis of asparaginyl bonds. This enzyme may be involved in the processing of bacterial peptides and endogenous proteins for MHC class II presentation in the lysosomal/endosomal systems. Enzyme activation is triggered by acidic pH and appears to be autocatalytic. Protein expression occurs after monocytes differentiate into dendritic cells. A fully mature, active enzyme is produced following lipopolysaccharide expression in mature dendritic cells. Overexpression of this gene may be associated with the majority of solid tumor types. This gene has a pseudogene on chromosome 13. Several alternatively spliced transcript variants have been described, but the biological validity of only two has been determined. These two variants encode the same isoform. [provided by RefSeq]

Other Designations asparaginyl endopeptidase|cysteine protease 1|protease, cysteine, 1 (legumain)

Pathway

- [Antigen processing and presentation](#)
- [Lysosome](#)