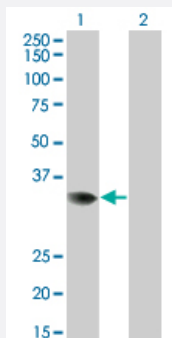


PRPS2 monoclonal antibody (M02), clone 4C1

Catalog # H00005634-M02

Size 100 ug

Applications

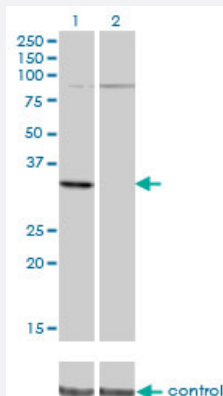


Western Blot (Transfected lysate)

Western Blot analysis of PRPS2 expression in transfected 293T cell line by PRPS2 monoclonal antibody (M02), clone 4C1.

Lane 1: PRPS2 transfected lysate(34.8 kDa).

Lane 2: Non-transfected lysate.



RNAi Knockdown (Antibody validated)

Western blot analysis of PRPS2 over-expressed 293 cell line, cotransfected with PRPS2 Validated Chimera RNAi (Cat # H00005634-R01V) (Lane 2) or non-transfected control (Lane 1). Blot probed with PRPS2 monoclonal antibody (M02), clone 4C1 (Cat # H00005634-M02). GAPDH (36.1 kDa) used as specificity and loading control.



Western Blot detection against Immunogen (37.84 kDa) .

Specification

Product Description

Mouse monoclonal antibody raised against a partial recombinant PRPS2.

Immunogen	PRPS2 (NP_002756, 160 a.a. ~ 269 a.a) partial recombinant protein with GST tag. MW of the GST tag alone is 26 KDa.
Sequence	AEWKNCIVSPDAGGAKRVTSIADRLNVEFALHKERKKANEVDRMVLVGDVKDRVAILVDDMADTCGTICHAADKLLSAGATKVYAILTHGIFSGPAISRINNAAFEAV
Host	Mouse
Reactivity	Human
Interspecies Antigen Sequence	Mouse (98); Rat (99)
Isotype	IgG2a Kappa
Quality Control Testing	Antibody Reactive Against Recombinant Protein. Western Blot detection against Immunogen (37.84 KDa) .
Storage Buffer	In 1x PBS, pH 7.4
Storage Instruction	Store at -20°C or lower. Aliquot to avoid repeated freezing and thawing.

Applications

- Western Blot (Transfected lysate)

Western Blot analysis of PRPS2 expression in transfected 293T cell line by PRPS2 monoclonal antibody (M02), clone 4C1.

Lane 1: PRPS2 transfected lysate(34.8 KDa).

Lane 2: Non-transfected lysate.

[Protocol Download](#)

- Western Blot (Recombinant protein)

[Protocol Download](#)

- ELISA

- RNAi Knockdown (Antibody validated)

Western blot analysis of PRPS2 over-expressed 293 cell line, cotransfected with PRPS2 Validated Chimera RNAi (Cat # H00005634-R01V) (Lane 2) or non-transfected control (Lane 1). Blot probed with PRPS2 monoclonal antibody (M02), clone 4C1 (Cat # H00005634-M02). GAPDH (36.1 kDa) used as specificity and loading control.

[Protocol Download](#)

Gene Info — PRPS2

Entrez GeneID	5634
GeneBank Accession#	NM_002765
Protein Accession#	NP_002756
Gene Name	PRPS2
Gene Alias	PRSII
Gene Description	phosphoribosyl pyrophosphate synthetase 2
Omim ID	311860
Gene Ontology	Hyperlink
Other Designations	OTTHUMP00000022921 PPRibP synthetase PRS II

Pathway

- [Biosynthesis of alkaloids derived from histidine and purine](#)
- [Biosynthesis of plant hormones](#)
- [Metabolic pathways](#)
- [Pentose phosphate pathway](#)
- [Purine metabolism](#)