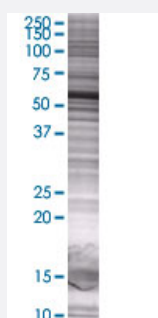


# PRPH 293T Cell Transient Overexpression Lysate(Denatured)

Catalog # H00005630-T01

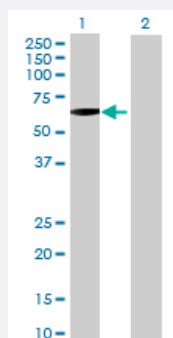
Size 100 uL

## Applications



### SDS-PAGE Gel

PRPH transfected lysate.



### Western Blot

Lane 1: PRPH transfected lysate ( 51.81 KDa)

Lane 2: Non-transfected lysate.

## Specification

**Transfected Cell Line** 293T

**Plasmid** pCMV-PRPH full-length

**Host** Human

**Theoretical MW (kDa)** 51.81

**Quality Control Testing** Transient overexpression cell lysate was tested with Anti-PRPH antibody ([H00005630-B01](#)) by Western Blots.  
 SDS-PAGE Gel  
 PRPH transfected lysate.  
 Western Blot  
 Lane 1: PRPH transfected lysate ( 51.81 KDa)  
 Lane 2: Non-transfected lysate.

**Storage Buffer**

1X Sample Buffer (50 mM Tris-HCl, 2% SDS, 10% glycerol, 300 mM 2-mercaptoethanol, 0.01% Bromophenol blue)

**Storage Instruction**

Store at -80°C. Aliquot to avoid repeated freezing and thawing.

## Applications

- Western Blot

## Gene Info — PRPH

**Entrez GeneID**[5630](#)**GeneBank Accession#**[NM\\_006262.3](#)**Protein Accession#**[NP\\_006253.2](#)**Gene Name**

PRPH

**Gene Alias**

NEF4, PRPH1

**Gene Description**

peripherin

**Omim ID**[105400 170710](#)**Gene Ontology**[Hyperlink](#)**Gene Summary**

This gene encodes a cytoskeletal protein found in neurons of the peripheral nervous system. The encoded protein is a type III intermediate filament protein with homology to other cytoskeletal proteins such as desmin, and is a different protein than the peripherin found in photoreceptors. Mutations in this gene have been associated with susceptibility to amyotrophic lateral sclerosis. [provided by RefSeq]

**Other Designations**

neurofilament 4 (57kD)

## Pathway

- [Amyotrophic lateral sclerosis \(ALS\)](#)

## Disease

- [Amyotrophic lateral sclerosis](#)
- [Charcot-Marie-Tooth Disease](#)
- [Deafness](#)