

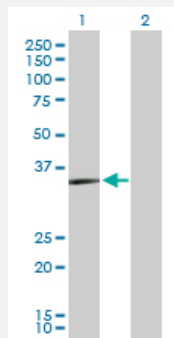
MaxPab®

# PRKY purified MaxPab rabbit polyclonal antibody (D01P)

Catalog # H00005616-D01P

Size 100 ug

## Applications



### Western Blot (Transfected lysate)

Western Blot analysis of PRKY expression in transfected 293T cell line ([H00005616-T01](#)) by PRKY MaxPab polyclonal antibody.

Lane 1: PRKY transfected lysate(31.70 KDa).

Lane 2: Non-transfected lysate.

## Specification

### Product Description

Rabbit polyclonal antibody raised against a full-length human PRKY protein.

### Immunogen

PRKY (NP\_002751.1, 1 a.a. ~ 277 a.a) full-length human protein.

### Sequence

MEAPGPAQAAAAESNSREVTEDAADWAPALCPSPEARSPEAPAYRLQDCDALVTMGTFGR  
VHLVKEKTAKHFFALKVMSIPDVIRRKQEQHVHNEKSVLKEVSHPFLLIRLFWTWHEERFLYMLMEY  
VPGGELFSYLRNRGHFSSTTGLFYSAEIIAIEYLHSEKENVYRDLKPENILLDRDGHKLTDFGFAKKL  
VDRTWTLCGTPEYLAPEVIQSKGHGRAVDWWALGILIFEMLSGFPPFFDDNPFGYQKILAGKLYF  
PRHLDFHVKTGRMM

### Host

Rabbit

### Reactivity

Human

### Quality Control Testing

Antibody reactive against mammalian transfected lysate.

### Storage Buffer

In 1x PBS, pH 7.4

### Storage Instruction

Store at -20°C or lower. Aliquot to avoid repeated freezing and thawing.

## Applications

- Western Blot (Transfected lysate)

Western Blot analysis of PRKY expression in transfected 293T cell line ([H00005616-T01](#)) by PRKY MaxPab polyclonal antibody.

Lane 1: PRKY transfected lysate(31.70 KDa).

Lane 2: Non-transfected lysate.

[Protocol Download](#)

## Gene Info — PRKY

Entrez GeneID	<a href="#">5616</a>
---------------	----------------------

GeneBank Accession#	<a href="#">NM_002760.3</a>
---------------------	-----------------------------

Protein Accession#	<a href="#">NP_002751.1</a>
--------------------	-----------------------------

Gene Name	PRKY
-----------	------

Gene Alias	-
------------	---

Gene Description	protein kinase, Y-linked
------------------	--------------------------

Omim ID	<a href="#">400008</a>
---------	------------------------

Gene Ontology	<a href="#">Hyperlink</a>
---------------	---------------------------

Gene Summary	This gene is similar to the protein kinase, X-linked gene in the pseudoautosomal region of the X chromosome. The gene is classified as a transcribed pseudogene because it has lost a coding exon that results in all transcripts being candidates for nonsense-mediated decay (NMD) and unlikely to express a protein. Abnormal recombination between this gene and a related gene on chromosome X is a frequent cause of XX males and XY females. [provided by RefSeq]
--------------	--

Other Designations	OTTHUMP00000033227
--------------------	--------------------

## Pathway

- [Apoptosis](#)
- [Calcium signaling pathway](#)
- [Chemokine signaling pathway](#)

- [Gap junction](#)
- [GnRH signaling pathway](#)
- [Hedgehog signaling pathway](#)
- [Insulin signaling pathway](#)
- [Long-term potentiation](#)
- [MAPK signaling pathway](#)
- [Melanogenesis](#)
- [Olfactory transduction](#)
- [Prion diseases](#)
- [Taste transduction](#)
- [Vascular smooth muscle contraction](#)
- [Vibrio cholerae infection](#)
- [Wnt signaling pathway](#)

## Disease

- [Genetic Predisposition to Disease](#)