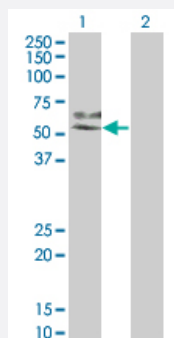


MAP2K7 monoclonal antibody (M04), clone 2G5

Catalog # H00005609-M04

Size 100 ug

Applications

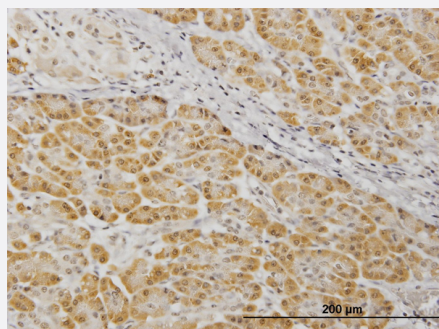


Western Blot (Transfected lysate)

Western Blot analysis of MAP2K7 expression in transfected 293T cell line by MAP2K7 monoclonal antibody (M04), clone 2G5.

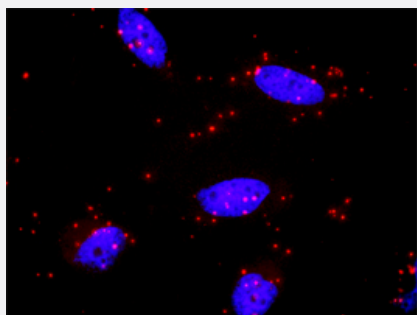
Lane 1: MAP2K7 transfected lysate (47.485 KDa).

Lane 2: Non-transfected lysate.



Immunohistochemistry (Formalin/PFA-fixed paraffin-embedded sections)

Immunoperoxidase of monoclonal antibody to MAP2K7 on formalin-fixed paraffin-embedded human pancreas. [antibody concentration 1.2 ug/ml]



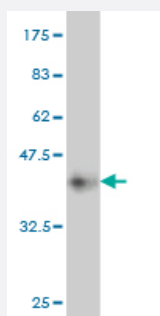
In situ Proximity Ligation Assay (Cell)

Proximity Ligation Analysis of protein-protein interactions between MAPK8 and MAP2K7. HeLa cells were stained with anti-MAPK8 rabbit purified polyclonal 1:1200 and anti-MAP2K7 mouse monoclonal antibody 1:50. Each red dot represents the detection of protein-protein interaction complex, and nuclei were counterstained with DAPI (blue).



Immunofluorescence

Immunofluorescence of monoclonal antibody to MAP2K7 on HeLa cell .
[antibody concentration 10 ug/ml]



Western Blot detection against Immunogen (36.63 KDa) .

Specification

Product Description	Mouse monoclonal antibody raised against a partial recombinant MAP2K7.
Immunogen	MAP2K7 (NP_660186, 1 a.a. ~ 99 a.a) partial recombinant protein with GST tag. MW of the GST tag alone is 26 KDa.
Sequence	MAASSLEQKLSRLEAKLKQENREARRRIDLNLDISPQRPRPTLQLPLANDGGSRSPSSESSPQHP TPPARPRHMLGLPSTLFTPRSMESIEDQKLQEI
Host	Mouse
Reactivity	Human
Interspecies Antigen Sequence	Mouse (84); Rat (99)
Isotype	IgG1 Kappa
Quality Control Testing	Antibody Reactive Against Recombinant Protein. Western Blot detection against Immunogen (36.63 KDa) .
Storage Buffer	In 1x PBS, pH 7.4
Storage Instruction	Store at -20°C or lower. Aliquot to avoid repeated freezing and thawing.

Applications

- Western Blot (Transfected lysate)

Western Blot analysis of MAP2K7 expression in transfected 293T cell line by MAP2K7 monoclonal antibody (M04), clone 2G5.

Lane 1: MAP2K7 transfected lysate(47.485 KDa).

Lane 2: Non-transfected lysate.

[Protocol Download](#)

- Western Blot (Recombinant protein)

[Protocol Download](#)

- Immunohistochemistry (Formalin/PFA-fixed paraffin-embedded sections)

Immunoperoxidase of monoclonal antibody to MAP2K7 on formalin-fixed paraffin-embedded human pancreas. [antibody concentration 1.2 ug/ml]

[Protocol Download](#)

- ELISA

- In situ* Proximity Ligation Assay (Cell)

Proximity Ligation Analysis of protein-protein interactions between MAPK8 and MAP2K7. HeLa cells were stained with anti-MAPK8 rabbit purified polyclonal 1:1200 and anti-MAP2K7 mouse monoclonal antibody 1:50. Each red dot represents the detection of protein-protein interaction complex, and nuclei were counterstained with DAPI (blue).

- Immunofluorescence

Immunofluorescence of monoclonal antibody to MAP2K7 on HeLa cell . [antibody concentration 10 ug/ml]

Gene Info — MAP2K7

Entrez GeneID	5609
---------------	----------------------

GeneBank Accession#	NM_145185
---------------------	---------------------------

Protein Accession#	NP_660186
--------------------	---------------------------

Gene Name	MAP2K7
-----------	--------

Gene Alias	Jnkk2, MAPKK7, MKK7, PRKMK7
------------	-----------------------------

Gene Description	mitogen-activated protein kinase kinase 7
------------------	---

Omim ID [603014](#)

Gene Ontology [Hyperlink](#)

Gene Summary

The protein encoded by this gene is a dual specificity protein kinase that belongs to the MAP kinase family. This kinase specifically activates MAPK8/JNK1 and MAPK9/JNK2, and this kinase itself is phosphorylated and activated by MAP kinase kinases including MAP3K1/MEKK1, MAP3K2/MEKK2, MAP3K3/MEKK5, and MAP4K2/GCK. This kinase is involved in the signal transduction mediating the cell responses to proinflammatory cytokines, and environmental stresses. Multiple alternatively spliced transcript variants encoding distinct isoforms have been found, but only one transcript variant has been supported and defined. [provided by RefSeq]

Other Designations

JNK kinase 2|JNK-activating kinase 2|MAP kinase kinase 7|OTTHUMP00000174397|c-Jun N-terminal kinase kinase 2|dual specificity mitogen-activated protein kinase kinase 7

Pathway

- [ErbB signaling pathway](#)
- [Fc epsilon RI signaling pathway](#)
- [GnRH signaling pathway](#)
- [MAPK signaling pathway](#)
- [Neurotrophin signaling pathway](#)
- [T cell receptor signaling pathway](#)
- [Toll-like receptor signaling pathway](#)