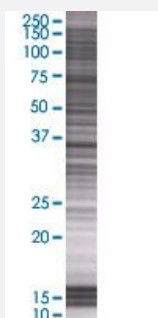


MAP2K6 293T Cell Transient Overexpression Lysate(Denatured)

Catalog # H00005608-T01

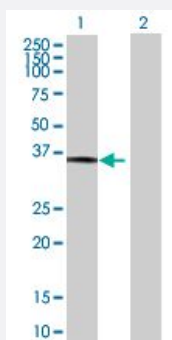
Size 100 uL

Applications



SDS-PAGE Gel

MAP2K6 transfected lysate.



Western Blot

Lane 1: MAP2K6 transfected lysate (36.85 KDa)

Lane 2: Non-transfected lysate.

Specification

Transfected Cell Line 293T

Plasmid pCMV-MAP2K6 full-length

Host Human

Theoretical MW (kDa) 36.85

Quality Control Testing Transient overexpression cell lysate was tested with Anti-MAP2K6 antibody ([H00005608-B01](#)) by Western Blots.
 SDS-PAGE Gel
 MAP2K6 transfected lysate.
 Western Blot
 Lane 1: MAP2K6 transfected lysate (36.85 KDa)
 Lane 2: Non-transfected lysate.

Storage Buffer

1X Sample Buffer (50 mM Tris-HCl, 2% SDS, 10% glycerol, 300 mM 2-mercaptoethanol, 0.01% Bromophenol blue)

Storage Instruction

Store at -80°C. Aliquot to avoid repeated freezing and thawing.

Applications

- Western Blot

Gene Info — MAP2K6

Entrez GeneID[5608](#)**GeneBank Accession#**[NM_002758.3](#)**Protein Accession#**[NP_002749.2](#)**Gene Name**

MAP2K6

Gene Alias

MAPKK6, MEK6, MKK6, PRKMK6, SAPKK3

Gene Description

mitogen-activated protein kinase kinase 6

Omim ID[601254](#)**Gene Ontology**[Hyperlink](#)**Gene Summary**

This gene encodes a member of the dual specificity protein kinase family, which functions as a mitogen-activated protein (MAP) kinase kinase. MAP kinases, also known as extracellular signal-regulated kinases (ERKs), act as an integration point for multiple biochemical signals. This protein phosphorylates and activates p38 MAP kinase in response to inflammatory cytokines or environmental stress. As an essential component of p38 MAP kinase mediated signal transduction pathway, this gene is involved in many cellular processes such as stress induced cell cycle arrest, transcription activation and apoptosis. [provided by RefSeq]

Other Designations

protein kinase, mitogen-activated, kinase 6 (MAP kinase kinase 6)

Pathway

- [Amyotrophic lateral sclerosis \(ALS\)](#)
- [Fc epsilon RI signaling pathway](#)
- [GnRH signaling pathway](#)

- [MAPK signaling pathway](#)
- [Toll-like receptor signaling pathway](#)

Disease

- [Cardiovascular Diseases](#)
- [Diabetes Mellitus](#)
- [Edema](#)
- [Huntington disease](#)