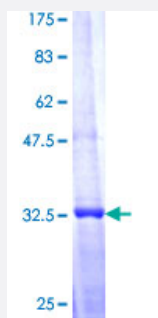


MAP2K6 (Human) Recombinant Protein (Q01)

Catalog # H00005608-Q01

Size 25 ug, 10 ug

Applications



Specification

Product Description	Human MAP2K6 partial ORF (AAH12009, 231 a.a. - 334 a.a.) recombinant protein with GST-tag at N-terminal.
Sequence	QKGYSVKSDWSLGITMIELAILRFPYDSWGTPFQQLKQVVEEPSQLPADKFSAEFVDFTSQCLK KNSKERPTYELMQHPFFTLHESKGTDVASFVKLILGD
Host	Wheat Germ (in vitro)
Theoretical MW (kDa)	37.18
Preparation Method	in vitro wheat germ expression system
Purification	Glutathione Sepharose 4 Fast Flow
Quality Control Testing	12.5% SDS-PAGE Stained with Coomassie Blue.
Storage Buffer	50 mM Tris-HCl, 10 mM reduced Glutathione, pH=8.0 in the elution buffer.
Storage Instruction	Store at -80°C. Aliquot to avoid repeated freezing and thawing.
Note	Best use within three months from the date of receipt of this protein.

Applications

- Enzyme-linked Immunoabsorbent Assay
- Western Blot (Recombinant protein)
- Antibody Production
- Protein Array

Gene Info — MAP2K6

Entrez GeneID [5608](#)

GeneBank Accession# [BC012009](#)

Protein Accession# [AAH12009](#)

Gene Name MAP2K6

Gene Alias MAPKK6, MEK6, MKK6, PRKMK6, SAPKK3

Gene Description mitogen-activated protein kinase kinase 6

Omim ID [601254](#)

Gene Ontology [Hyperlink](#)

Gene Summary This gene encodes a member of the dual specificity protein kinase family, which functions as a mitogen-activated protein (MAP) kinase kinase. MAP kinases, also known as extracellular signal-regulated kinases (ERKs), act as an integration point for multiple biochemical signals. This protein phosphorylates and activates p38 MAP kinase in response to inflammatory cytokines or environmental stress. As an essential component of p38 MAP kinase mediated signal transduction pathway, this gene is involved in many cellular processes such as stress induced cell cycle arrest, transcription activation and apoptosis. [provided by RefSeq]

Other Designations protein kinase, mitogen-activated, kinase 6 (MAP kinase kinase 6)

Pathway

- [Amyotrophic lateral sclerosis \(ALS\)](#)
- [Fc epsilon RI signaling pathway](#)
- [GnRH signaling pathway](#)

- [MAPK signaling pathway](#)
- [Toll-like receptor signaling pathway](#)

Disease

- [Cardiovascular Diseases](#)
- [Diabetes Mellitus](#)
- [Edema](#)
- [Huntington disease](#)