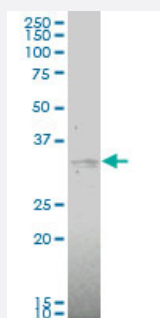


MAP2K6 monoclonal antibody (M02), clone 2F2

Catalog # H00005608-M02

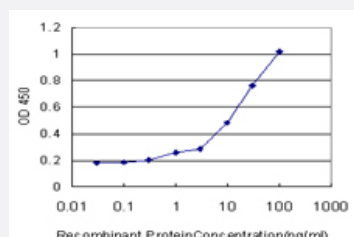
Size 100 ug

Applications



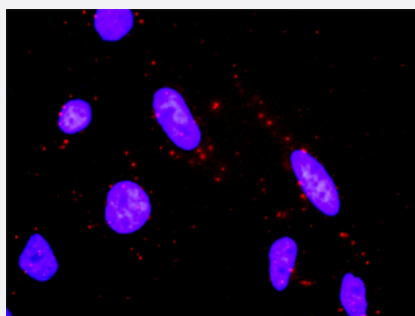
Western Blot (Cell lysate)

MAP2K6 monoclonal antibody (M02), clone 2F2 Western Blot analysis of MAP2K6 expression in COLO 320 HSR (Cat # L020V1).



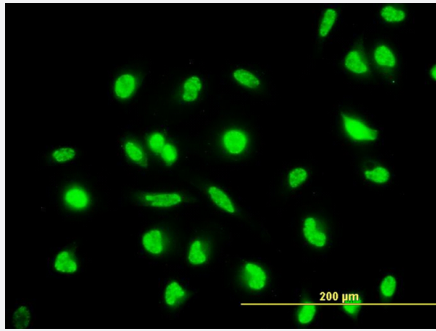
Sandwich ELISA (Recombinant protein)

Detection limit for recombinant GST tagged MAP2K6 is approximately 0.3ng/ml as a capture antibody.



In situ Proximity Ligation Assay (Cell)

Proximity Ligation Analysis of protein-protein interactions between MAP2K3 and MAP2K6. HeLa cells were stained with anti-MAP2K3 rabbit purified polyclonal 1:1200 and anti-MAP2K6 mouse monoclonal antibody 1:50. Each red dot represents the detection of protein-protein interaction complex, and nuclei were counterstained with DAPI (blue).



Immunofluorescence

Immunofluorescence of monoclonal antibody to MAP2K6 on HeLa cell.
[antibody concentration 10 ug/ml]

Specification

Product Description	Mouse monoclonal antibody raised against a partial recombinant MAP2K6.
Immunogen	MAP2K6 (AAH12009, 231 a.a. ~ 334 a.a) partial recombinant protein with GST tag. MW of the GST tag alone is 26 KDa.
Sequence	QKGYSVKSDMSLGITMIELAILRFPYDSWGTPFQQLKQVVEEPSQLPADKFSAEFVDFTSQCLK KNSKERPTYPELMQHPFFTLHESKGTDVASFVKLILGD
Host	Mouse
Reactivity	Human
Isotype	IgG2a Kappa
Quality Control Testing	Antibody Reactive Against Recombinant Protein.
Storage Buffer	In 1x PBS, pH 7.4
Storage Instruction	Store at -20°C or lower. Aliquot to avoid repeated freezing and thawing.

Applications

- Western Blot (Cell lysate)

MAP2K6 monoclonal antibody (M02), clone 2F2 Western Blot analysis of MAP2K6 expression in COLO 320 HSR (Cat # L020V1).

[Protocol Download](#)

- Sandwich ELISA (Recombinant protein)

Detection limit for recombinant GST tagged MAP2K6 is approximately 0.3ng/ml as a capture antibody.

[Protocol Download](#)

- ELISA

- *In situ* Proximity Ligation Assay (Cell)

Proximity Ligation Analysis of protein-protein interactions between MAP2K3 and MAP2K6. HeLa cells were stained with anti-MAP2K3 rabbit purified polyclonal 1:1200 and anti-MAP2K6 mouse monoclonal antibody 1:50. Each red dot represents the detection of protein-protein interaction complex, and nuclei were counterstained with DAPI (blue).

- Immunofluorescence

Immunofluorescence of monoclonal antibody to MAP2K6 on HeLa cell. [antibody concentration 10 ug/ml]

Gene Info — MAP2K6

Entrez GeneID [5608](#)

GeneBank Accession# [BC012009](#)

Protein Accession# [AAH12009](#)

Gene Name MAP2K6

Gene Alias MAPKK6, MEK6, MKK6, PRKMK6, SAPKK3

Gene Description mitogen-activated protein kinase kinase 6

Omim ID [601254](#)

Gene Ontology [Hyperlink](#)

Gene Summary This gene encodes a member of the dual specificity protein kinase family, which functions as a mitogen-activated protein (MAP) kinase kinase. MAP kinases, also known as extracellular signal-regulated kinases (ERKs), act as an integration point for multiple biochemical signals. This protein phosphorylates and activates p38 MAP kinase in response to inflammatory cytokines or environmental stress. As an essential component of p38 MAP kinase mediated signal transduction pathway, this gene is involved in many cellular processes such as stress induced cell cycle arrest, transcription activation and apoptosis. [provided by RefSeq]

Other Designations protein kinase, mitogen-activated, kinase 6 (MAP kinase kinase 6)

Pathway

- [Amyotrophic lateral sclerosis \(ALS\)](#)
- [Fc epsilon RI signaling pathway](#)
- [GnRH signaling pathway](#)
- [MAPK signaling pathway](#)
- [Toll-like receptor signaling pathway](#)

Disease

- [Cardiovascular Diseases](#)
- [Diabetes Mellitus](#)
- [Edema](#)
- [Huntington disease](#)