

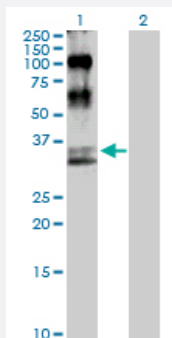
MaxPab®

MAP2K6 purified MaxPab rabbit polyclonal antibody (D01P)

Catalog # H00005608-D01P

Size 100 ug

Applications

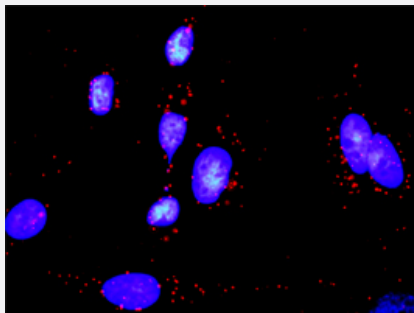


Western Blot (Transfected lysate)

Western Blot analysis of MAP2K6 expression in transfected 293T cell line ([H00005608-T01](#)) by MAP2K6 MaxPab polyclonal antibody.

Lane 1: MAP2K6 transfected lysate(37.50 KDa).

Lane 2: Non-transfected lysate.



In situ Proximity Ligation Assay (Cell)

Proximity Ligation Analysis of protein-protein interactions between MAP2K6 and GADD45A. HeLa cells were stained with anti-MAP2K6 rabbit purified polyclonal 1:1200 and anti-GADD45A mouse monoclonal antibody 1:50. Each red dot represents the detection of protein-protein interaction complex, and nuclei were counterstained with DAPI (blue).

Specification

Product Description

Rabbit polyclonal antibody raised against a full-length human MAP2K6 protein.

Immunogen

MAP2K6 (NP_002749.2, 1 a.a. ~ 334 a.a) full-length human protein.

Sequence

MSQSKGKKRNPGLKIPKEAFEQPQTSSTPPRDLSKACISIGNQNFEVKADDLEPIMELGRGAYG
VVEKMRHVPSPGQIMAVKRIRATVNSQEQKRLLMDLDISMRTVDCPFTVTFTYGALFREGDVWICME
LMDTSLDKFYKQVIDKGQTIPEDILGKIAVSIVKALEHLHSLSVIHRDVKPSNVLINALGQVKMCD
GISGYLVDSVAKTIDAGCKPYMAPERINPELNQKGYSVKSDMWSLGITMIELAILRFPYDSWGTPFQQ
LKQVVEEPSPQLPADKFSAEFVDFTSQCLKKNSKERPTYPELMQHPFFTLHESKGTDVASFVKLI
LGD

Host

Rabbit

Reactivity	Human
Quality Control Testing	Antibody reactive against mammalian transfected lysate.
Storage Buffer	In 1x PBS, pH 7.4
Storage Instruction	Store at -20°C or lower. Aliquot to avoid repeated freezing and thawing.

Applications

- Western Blot (Transfected lysate)

Western Blot analysis of MAP2K6 expression in transfected 293T cell line ([H00005608-T01](#)) by MAP2K6 MaxPab polyclonal antibody.

Lane 1: MAP2K6 transfected lysate(37.50 KDa).

Lane 2: Non-transfected lysate.

[Protocol Download](#)

- In situ* Proximity Ligation Assay (Cell)

Proximity Ligation Analysis of protein-protein interactions between MAP2K6 and GADD45A. HeLa cells were stained with anti-MAP2K6 rabbit purified polyclonal 1:1200 and anti-GADD45A mouse monoclonal antibody 1:50. Each red dot represents the detection of protein-protein interaction complex, and nuclei were counterstained with DAPI (blue).

Gene Info — MAP2K6

Entrez GeneID	5608
GeneBank Accession#	NM_002758.3
Protein Accession#	NP_002749.2
Gene Name	MAP2K6
Gene Alias	MAPKK6, MEK6, MKK6, PRKMK6, SAPKK3
Gene Description	mitogen-activated protein kinase kinase 6
Omim ID	601254
Gene Ontology	Hyperlink

Gene Summary

This gene encodes a member of the dual specificity protein kinase family, which functions as a mitogen-activated protein (MAP) kinase kinase. MAP kinases, also known as extracellular signal-regulated kinases (ERKs), act as an integration point for multiple biochemical signals. This protein phosphorylates and activates p38 MAP kinase in response to inflammatory cytokines or environmental stress. As an essential component of p38 MAP kinase mediated signal transduction pathway, this gene is involved in many cellular processes such as stress induced cell cycle arrest, transcription activation and apoptosis. [provided by RefSeq]

Other Designations

protein kinase, mitogen-activated, kinase 6 (MAP kinase kinase 6)

Pathway

- [Amyotrophic lateral sclerosis \(ALS\)](#)
- [Fc epsilon RI signaling pathway](#)
- [GnRH signaling pathway](#)
- [MAPK signaling pathway](#)
- [Toll-like receptor signaling pathway](#)

Disease

- [Cardiovascular Diseases](#)
- [Diabetes Mellitus](#)
- [Edema](#)
- [Huntington disease](#)