

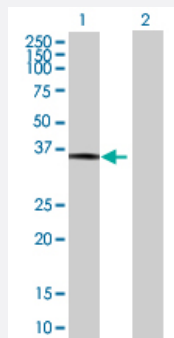
MaxPab®

MAP2K6 MaxPab mouse polyclonal antibody (B01P)

Catalog # H00005608-B01P

Size 50 ug

Applications



Western Blot (Transfected lysate)

Western Blot analysis of MAP2K6 expression in transfected 293T cell line ([H00005608-T01](#)) by MAP2K6 MaxPab polyclonal antibody.

Lane 1: MAP2K6 transfected lysate (36.74 kDa).

Lane 2: Non-transfected lysate.

Specification

Product Description	Mouse polyclonal antibody raised against a full-length human MAP2K6 protein.
Immunogen	MAP2K6 (NP_002749.2, 1 a.a. ~ 334 a.a) full-length human protein.
Sequence	MSQSKGKKRNPGLKIPKEAFEQPQTSSTPPRDLDSKACISIGNQNFEVKADDLEPIMELGRGAYGVVEKMRHVPSPGQIMAVKRIRATVNSQEQKRLLMDLDISMRTVDCPFTVTFYGALFREGDVVICMELMDTSLDKFYKQVIDKGQTIPEDILGKIAVSIVKALEHLHSLKSLVIHRDVKPSNVLINALGQVKMCDFGISGYLVDSVAKTIDAGCKPYMAPERINPELNQKGYSVKSDWSLGITMIELAILRFPYDSWGTPTFQQLKQVVEEPPSPQLPADKFSAEFVDFTSQCLKKNKERPTYPELMQHPFFTLHESKGTDVASFVKLI LGD
Host	Mouse
Reactivity	Human
Quality Control Testing	Antibody reactive against mammalian transfected lysate.
Storage Buffer	In 1x PBS, pH 7.4
Storage Instruction	Store at -20°C or lower. Aliquot to avoid repeated freezing and thawing.

Applications

- Western Blot (Transfected lysate)

Western Blot analysis of MAP2K6 expression in transfected 293T cell line ([H00005608-T01](#)) by MAP2K6 MaxPab polyclonal antibody.

Lane 1: MAP2K6 transfected lysate(36.74 KDa).

Lane 2: Non-transfected lysate.

[Protocol Download](#)

Gene Info — MAP2K6

Entrez GeneID [5608](#)

GeneBank Accession# [NM_002758.3](#)

Protein Accession# [NP_002749.2](#)

Gene Name MAP2K6

Gene Alias MAPKK6, MEK6, MKK6, PRKMK6, SAPKK3

Gene Description mitogen-activated protein kinase kinase 6

Omim ID [601254](#)

Gene Ontology [Hyperlink](#)

Gene Summary This gene encodes a member of the dual specificity protein kinase family, which functions as a mitogen-activated protein (MAP) kinase kinase. MAP kinases, also known as extracellular signal-regulated kinases (ERKs), act as an integration point for multiple biochemical signals. This protein phosphorylates and activates p38 MAP kinase in response to inflammatory cytokines or environmental stress. As an essential component of p38 MAP kinase mediated signal transduction pathway, this gene is involved in many cellular processes such as stress induced cell cycle arrest, transcription activation and apoptosis. [provided by RefSeq]

Other Designations protein kinase, mitogen-activated, kinase 6 (MAP kinase kinase 6)

Pathway

- [Amyotrophic lateral sclerosis \(ALS\)](#)
- [Fc epsilon RI signaling pathway](#)
- [GnRH signaling pathway](#)

- [MAPK signaling pathway](#)
- [Toll-like receptor signaling pathway](#)

Disease

- [Cardiovascular Diseases](#)
- [Diabetes Mellitus](#)
- [Edema](#)
- [Huntington disease](#)