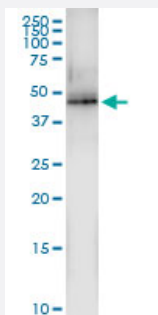


MAP2K5 (Human) IP-WB Antibody Pair

Catalog # H00005607-PW1

Size 1 Set

Applications



Immunoprecipitation of MAP2K5 transfected lysate using rabbit polyclonal anti-MAP2K5 and Protein A Magnetic Bead ([U0007](#)), and immunoblotted with mouse polyclonal anti-MAP2K5.

Specification

Product Description	This IP-WB antibody pair set comes with one antibody for immunoprecipitation and another to detect the precipitated protein in western blot.
Reactivity	Human
Interspecies Antigen Sequence	Mouse (97%); Rat (98%)
Quality Control Testing	Immunoprecipitation-Western Blot (IP-WB) Immunoprecipitation of MAP2K5 transfected lysate using rabbit polyclonal anti-MAP2K5 and Protein A Magnetic Bead (U0007), and immunoblotted with mouse polyclonal anti-MAP2K5.
Supplied Product	Antibody pair set content: 1. Antibody pair for IP: rabbit polyclonal anti-MAP2K5 (300 ul) 2. Antibody pair for WB: mouse polyclonal anti-MAP2K5 (50 ul)
Storage Instruction	Store reagents of the antibody pair set at -20°C or lower. Please aliquot to avoid repeated freeze thaw cycle. Reagents should be returned to -20°C storage immediately after use.

Applications

- Immunoprecipitation-Western Blot

[Protocol Download](#)

Gene Info — MAP2K5

Entrez GeneID [5607](#)

Gene Name MAP2K5

Gene Alias HsT17454, MAPKK5, MEK5, PRKMK5

Gene Description mitogen-activated protein kinase kinase 5

Omim ID [602520](#)

Gene Ontology [Hyperlink](#)

Gene Summary The protein encoded by this gene is a dual specificity protein kinase that belongs to the MAP kinase family. This kinase specifically interacts with and activates MAPK7/ERK5. This kinase itself can be phosphorylated and activated by MAP3K3/MEKK3, as well as by atypical protein kinase C isoforms (aPKCs). The signal cascade mediated by this kinase is involved in growth factor stimulated cell proliferation and muscle cell differentiation. Four alternatively spliced transcript variants of this gene encoding distinct isoforms have been described. [provided by RefSeq]

Other Designations MAP kinase kinase MEK5b|MAPK/ERK kinase 5|dual specificity mitogen-activated protein kinase 5

Pathway

- [Gap junction](#)
- [MAPK signaling pathway](#)
- [Neurotrophin signaling pathway](#)

Disease

- [Attention Deficit Disorder with Hyperactivity](#)
- [Cardiovascular Diseases](#)
- [Diabetes Mellitus](#)

- [Edema](#)
- [Genetic Predisposition to Disease](#)
- [Neuropsychological Tests](#)
- [Nocturnal Myoclonus Syndrome](#)
- [Obsessive-Compulsive Disorder](#)
- [Restless Legs Syndrome](#)
- [Tourette Syndrome](#)