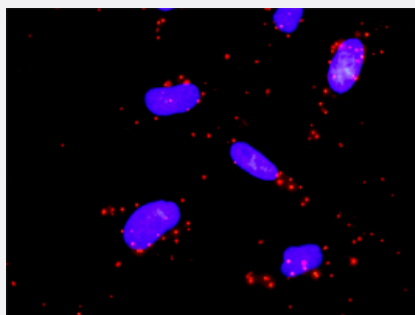


MAP2K5 monoclonal antibody (M03), clone 1E5

Catalog # H00005607-M03

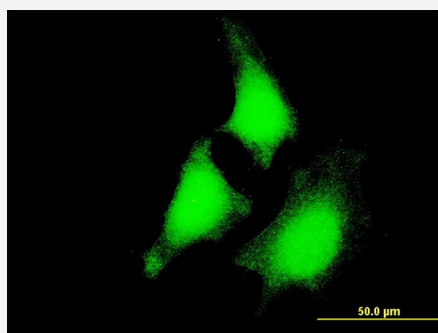
Size 100 ug

Applications



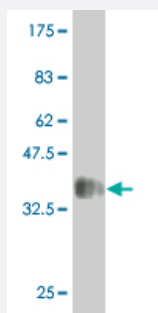
In situ Proximity Ligation Assay (Cell)

Proximity Ligation Analysis of protein-protein interactions between MAP3K3 and MAP2K5. HeLa cells were stained with anti-MAP3K3 rabbit purified polyclonal 1:1200 and anti-MAP2K5 mouse monoclonal antibody 1:50. Each red dot represents the detection of protein-protein interaction complex, and nuclei were counterstained with DAPI (blue).



Immunofluorescence

Immunofluorescence of monoclonal antibody to MAP2K5 on HeLa cell .
[antibody concentration 10 ug/ml]



Western Blot detection against Immunogen (38.83 KDa) .

Specification

Product Description

Mouse monoclonal antibody raised against a partial recombinant MAP2K5.

Immunogen	MAP2K5 (AAH08838, 1 a.a. ~ 120 a.a) partial recombinant protein with GST tag. MW of the GST tag alone is 26 KDa.
Sequence	MLWLALGPFPMENQVLVIRIKIPNSGAVDWTVHSGPQLLFRDVLVDVIGQVLPEATTTAFEYEDDGDRITVRSDEEMKAMLSYYSTVMEQQVNGQLIEPLQIFPRACKPPGERNIHGL
Host	Mouse
Reactivity	Human
Interspecies Antigen Sequence	Mouse (99); Rat (99)
Isotype	IgG1 Kappa
Quality Control Testing	Antibody Reactive Against Recombinant Protein. Western Blot detection against Immunogen (38.83 KDa) .
Storage Buffer	In 1x PBS, pH 7.4
Storage Instruction	Store at -20°C or lower. Aliquot to avoid repeated freezing and thawing.

Applications

- Western Blot (Recombinant protein)

[Protocol Download](#)

- ELISA

- In situ* Proximity Ligation Assay (Cell)

Proximity Ligation Analysis of protein-protein interactions between MAP3K3 and MAP2K5. HeLa cells were stained with anti-MAP3K3 rabbit purified polyclonal 1:1200 and anti-MAP2K5 mouse monoclonal antibody 1:50. Each red dot represents the detection of protein-protein interaction complex, and nuclei were counterstained with DAPI (blue).

- Immunofluorescence

Immunofluorescence of monoclonal antibody to MAP2K5 on HeLa cell . [antibody concentration 10 ug/ml]

Gene Info — MAP2K5

Entrez GeneID [5607](#)

GeneBank Accession# [BC008838](#)

Protein Accession#	AAH08838
Gene Name	MAP2K5
Gene Alias	HsT17454, MAPKK5, MEK5, PRKMK5
Gene Description	mitogen-activated protein kinase kinase 5
Omim ID	602520
Gene Ontology	Hyperlink
Gene Summary	The protein encoded by this gene is a dual specificity protein kinase that belongs to the MAP kinase family. This kinase specifically interacts with and activates MAPK7/ERK5. This kinase itself can be phosphorylated and activated by MAP3K3/MEKK3, as well as by atypical protein kinase C isoforms (aPKCs). The signal cascade mediated by this kinase is involved in growth factor stimulated cell proliferation and muscle cell differentiation. Four alternatively spliced transcript variants of this gene encoding distinct isoforms have been described. [provided by RefSeq]
Other Designations	MAP kinase kinase MEK5b MAPK/ERK kinase 5 dual specificity mitogen-activated protein kinase kinase 5

Pathway

- [Gap junction](#)
- [MAPK signaling pathway](#)
- [Neurotrophin signaling pathway](#)

Disease

- [Attention Deficit Disorder with Hyperactivity](#)
- [Cardiovascular Diseases](#)
- [Diabetes Mellitus](#)
- [Edema](#)
- [Genetic Predisposition to Disease](#)
- [Neuropsychological Tests](#)
- [Nocturnal Myoclonus Syndrome](#)
- [Obsessive-Compulsive Disorder](#)

- [Restless Legs Syndrome](#)
- [Tourette Syndrome](#)