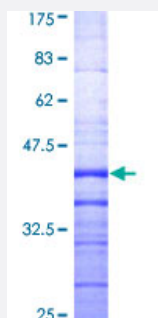


MAP2K3 (Human) Recombinant Protein (Q01)

Catalog # H00005606-Q01

Size 25 ug, 10 ug

Applications



Specification

Product Description	Human MAP2K3 partial ORF (AAH32478, 1 a.a. - 100 a.a.) recombinant protein with GST-tag at N-terminal.
Sequence	MESPASSQPASMPQSKGKSKRKKDLRISCMSKPPAPNPTPPRNLDSTFTITIGDRNFEVEADDLVTISELGRGAYGVVEKVRHAQSGTIMAVKRIRATVN
Host	Wheat Germ (in vitro)
Theoretical MW (kDa)	36.63
Preparation Method	in vitro wheat germ expression system
Purification	Glutathione Sepharose 4 Fast Flow
Quality Control Testing	12.5% SDS-PAGE Stained with Coomassie Blue.
Storage Buffer	50 mM Tris-HCl, 10 mM reduced Glutathione, pH=8.0 in the elution buffer.
Storage Instruction	Store at -80°C. Aliquot to avoid repeated freezing and thawing.
Note	Best use within three months from the date of receipt of this protein.

Applications

- Enzyme-linked Immunoabsorbent Assay
- Western Blot (Recombinant protein)
- Antibody Production
- Protein Array

Gene Info — MAP2K3

Entrez GeneID [5606](#)

GeneBank Accession# [BC032478](#)

Protein Accession# [AAH32478](#)

Gene Name MAP2K3

Gene Alias MAPKK3, MEK3, MKK3, PRKMK3

Gene Description mitogen-activated protein kinase kinase 3

Omim ID [602315](#)

Gene Ontology [Hyperlink](#)

Gene Summary The protein encoded by this gene is a dual specificity protein kinase that belongs to the MAP kinase family. This kinase is activated by mitogenic and environmental stress, and participates in the MAP kinase-mediated signaling cascade. It phosphorylates and thus activates MAPK14/p38-MAPK. This kinase can be activated by insulin, and is necessary for the expression of glucose transporter. Expression of RAS oncogene is found to result in the accumulation of the active form of this kinase, which thus leads to the constitutive activation of MAPK14, and confers oncogenic transformation of primary cells. The inhibition of this kinase is involved in the pathogenesis of Yersinia pseudotuberculosis. Multiple alternatively spliced transcript variants that encode distinct isoforms have been reported for this gene. [provided by RefSeq]

Other Designations MAP kinase kinase 3|MAPK/ERK kinase 3|OTTHUMP00000166044|dual specificity mitogen activated protein kinase kinase 3

Pathway

- [Amyotrophic lateral sclerosis \(ALS\)](#)

- [Fc epsilon RI signaling pathway](#)
- [GnRH signaling pathway](#)
- [MAPK signaling pathway](#)
- [Toll-like receptor signaling pathway](#)