

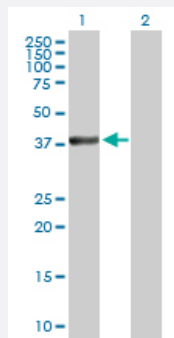
MaxPab®

# MAP2K3 purified MaxPab rabbit polyclonal antibody (D01P)

Catalog # H00005606-D01P

Size 100 ug

## Applications

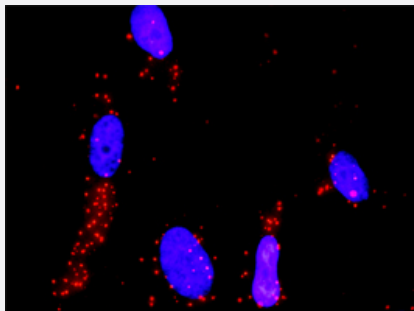


### Western Blot (Transfected lysate)

Western Blot analysis of MAP2K3 expression in transfected 293T cell line ([H00005606-T01](#)) by MAP2K3 MaxPab polyclonal antibody.

Lane 1: MAP2K3 transfected lysate(39.30 KDa).

Lane 2: Non-transfected lysate.



### In situ Proximity Ligation Assay (Cell)

Proximity Ligation Analysis of protein-protein interactions between MAP2K3 and MAP3K4. HeLa cells were stained with anti-MAP2K3 rabbit purified polyclonal 1:1200 and anti-MAP3K4 mouse monoclonal antibody 1:50. Each red dot represents the detection of protein-protein interaction complex, and nuclei were counterstained with DAPI (blue).

## Specification

### Product Description

Rabbit polyclonal antibody raised against a full-length human MAP2K3 protein.

### Immunogen

MAP2K3 (NP\_659731.1, 1 a.a. ~ 347 a.a) full-length human protein.

### Sequence

MESPASSQPASMPQSKGKSKRKKDLRISCMSKPPAPNPTPPRNLDSTFTITGDRNFEVEADDL  
VTISELGRGAYGVVEKVRHAQSGTIMAVKRIRATVNSQEQKRLMLDLDINMRTVDCFYTVTFYGALF  
REGDVWICMELMDTSLDKFYRKVLDKNMTIPEDILGEIAVSIVRALEHLHSLSVIHRDVKPSNVLIN  
KEGHVKMCDFGISGYLVDSVAKTMDAGCKPYMAPERINPELNQKGYNVKSDVWSLGITMIEMAIL  
RFPYESWGTPFQQLKQVVEEPSQLPADRFSPFVDFTAQCLRKNAERMSYLELMEHPFFTLH  
KTKKTDIAAFVKEILGEDS

### Host

Rabbit

Reactivity	Human
Quality Control Testing	Antibody reactive against mammalian transfected lysate.
Storage Buffer	In 1x PBS, pH 7.4
Storage Instruction	Store at -20°C or lower. Aliquot to avoid repeated freezing and thawing.

## Applications

- Western Blot (Transfected lysate)

Western Blot analysis of MAP2K3 expression in transfected 293T cell line ([H00005606-T01](#)) by MAP2K3 MaxPab polyclonal antibody.

Lane 1: MAP2K3 transfected lysate(39.30 KDa).

Lane 2: Non-transfected lysate.

[Protocol Download](#)

- In situ* Proximity Ligation Assay (Cell)

Proximity Ligation Analysis of protein-protein interactions between MAP2K3 and MAP3K4. HeLa cells were stained with anti-MAP2K3 rabbit purified polyclonal 1:1200 and anti-MAP3K4 mouse monoclonal antibody 1:50. Each red dot represents the detection of protein-protein interaction complex, and nuclei were counterstained with DAPI (blue).

## Gene Info — MAP2K3

Entrez GeneID	<a href="#">5606</a>
GeneBank Accession#	<a href="#">NM_145109.1</a>
Protein Accession#	<a href="#">NP_659731.1</a>
Gene Name	MAP2K3
Gene Alias	MAPKK3, MEK3, MKK3, PRKMK3
Gene Description	mitogen-activated protein kinase kinase 3
Omim ID	<a href="#">602315</a>
Gene Ontology	<a href="#">Hyperlink</a>

**Gene Summary**

The protein encoded by this gene is a dual specificity protein kinase that belongs to the MAP kinase family. This kinase is activated by mitogenic and environmental stress, and participates in the MAP kinase-mediated signaling cascade. It phosphorylates and thus activates MAPK14/p38-MAPK. This kinase can be activated by insulin, and is necessary for the expression of glucose transporter. Expression of RAS oncogene is found to result in the accumulation of the active form of this kinase, which thus leads to the constitutive activation of MAPK14, and confers oncogenic transformation of primary cells. The inhibition of this kinase is involved in the pathogenesis of Yersinia pseudotuberculosis. Multiple alternatively spliced transcript variants that encode distinct isoforms have been reported for this gene. [provided by RefSeq]

**Other Designations**

MAP kinase kinase 3|MAPK/ERK kinase 3|OTTHUMP00000166044|dual specificity mitogen activated protein kinase kinase 3

## Pathway

- [Amyotrophic lateral sclerosis \(ALS\)](#)
- [Fc epsilon RI signaling pathway](#)
- [GnRH signaling pathway](#)
- [MAPK signaling pathway](#)
- [Toll-like receptor signaling pathway](#)