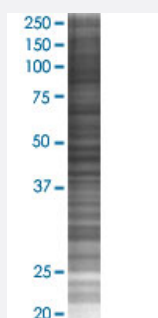


MAPK13 293T Cell Transient Overexpression Lysate(Denatured)

Catalog # H00005603-T02

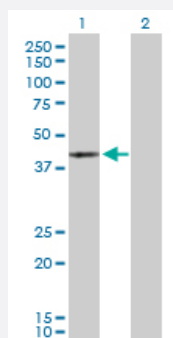
Size 100 uL

Applications



SDS-PAGE Gel

MAPK13 transfected lysate.



Western Blot

Lane 1: MAPK13 transfected lysate (42.10 KDa)

Lane 2: Non-transfected lysate.

Specification

Transfected Cell Line 293T

Plasmid pCMV-MAPK13 full-length

Host Human

Theoretical MW (kDa) 42.1

Quality Control Testing Transient overexpression cell lysate was tested with Anti-MAPK13 antibody ([H00005603-D01P](#)) by Western Blots.
 SDS-PAGE Gel
 MAPK13 transfected lysate.
 Western Blot
 Lane 1: MAPK13 transfected lysate (42.10 KDa)
 Lane 2: Non-transfected lysate.

Storage Buffer

1X Sample Buffer (50 mM Tris-HCl, 2% SDS, 10% glycerol, 300 mM 2-mercaptoethanol, 0.01% Bromophenol blue)

Storage Instruction

Store at -80°C. Aliquot to avoid repeated freezing and thawing.

Applications

- Western Blot

Gene Info — MAPK13

Entrez GeneID[5603](#)**GeneBank Accession#**[NM_002754](#)**Protein Accession#**[NP_002745.1](#)**Gene Name**

MAPK13

Gene Alias

MGC99536, PRKM13, SAPK4, p38delta

Gene Description

mitogen-activated protein kinase 13

Omim ID[602899](#)**Gene Ontology**[Hyperlink](#)**Gene Summary**

The protein encoded by this gene is a member of the MAP kinase family. MAP kinases act as an integration point for multiple biochemical signals, and are involved in a wide variety of cellular processes such as proliferation, differentiation, transcription regulation and development. This kinase is closely related to p38 MAP kinase, both of which can be activated by proinflammatory cytokines and cellular stress. MAP kinase kinases 3, and 6 can phosphorylate and activate this kinase. Transcription factor ATF2, and microtubule dynamics regulator stathmin have been shown to be the substrates of this kinase. [provided by RefSeq]

Other Designations

OTTHUMP00000016282|mitogen-activated protein kinase p38 delta|stress-activated protein kinase 4

Pathway

- [Amyotrophic lateral sclerosis \(ALS\)](#)
- [Epithelial cell signaling in Helicobacter pylori infection](#)

- [Fc epsilon RI signaling pathway](#)
- [GnRH signaling pathway](#)
- [Leukocyte transendothelial migration](#)
- [MAPK signaling pathway](#)
- [Neurotrophin signaling pathway](#)
- [T cell receptor signaling pathway](#)
- [Toll-like receptor signaling pathway](#)
- [VEGF signaling pathway](#)

Disease

- [Cardiovascular Diseases](#)
- [Diabetes Mellitus](#)
- [Edema](#)
- [HIV Infections](#)